





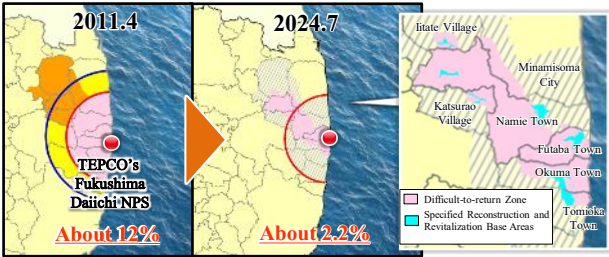
# Towards the Realisation of a “New Fukushima” - Tracing the Path of Recovery (2/2)

## Steady Reconstruction and Revitalization of Evacuation Zones

### ◆Development Status of Living Environment in 15 Municipalities (Residential rate as of Jan 2025)

Medical ... ● Education... ● Welfare... ● Commerce ... ● Other... ●

24 Mar. 2025



Evacuation-Designated Zones, which accounted for approximately 12% of the total prefectural land immediately after the disaster, have been reduced to about 2.2%.

Specified Reconstruction and Revitalization Base Areas and Specified Living Areas for Returnees have been established within the Difficult-to-return Zone for further development of the living environment.

## Shinchi Town

- Sep. 2016 ● Completion of Shinchi Town Fire and Disaster Prevention Centre
- Dec. 2016 ● Resumption of services on the JR Joban Line between Soma and Hamayoshida
- Nov. 2018 ● Completion of Shinchi Energy Centre
- Apr. 2019 ● Reopening of Shinchi Marine Fishing Park
- Apr. 2019 ● Completion of commercial complex
- Jul. 2019 ● Reopening of Tsurushihama Swimming Beach
- Oct. 2019 ● Unveiling of Great East Japan Earthquake Cenotaph
- Dec. 2019 ● Opening of Tsurushi Disaster Prevention Green Space Park [Photo]
- Aug. 2020 ● Opening of Shinchi Cultural Exchange Centre
- Dec. 2020 ● Reopening of Shinchi Regional Wholesale Market (Tsurushi Fishing Port)



## Soma City

- Apr. 2015 ● Opening of the Soma City Heritage and Memorial Hall
- Apr. 2017 ● Matsukawaura Bridge placed in service, resumption of illumination
- Feb. 2018 ● Resumption of nori seaweed harvest and shipment (first time since the disaster)
- Mar. 2018 ● Commencement of operations at Soma LNG Terminal and other facilities
- Oct. 2020 ● Grand opening of Matsukawaura Seaside Station [Photo]



## Minamisoma City

- Apr. 2014 ● Odaka Municipal Hospital resumes outpatient services three days a week
- Jul. 2016 [Evacuation order lifted, excluding the Difficult-to-return Zone]
- Apr. 2017 ● Reopening of Odaka Dispensary
- Apr. 2017 ● Opening of Odaka Industrial Technology and Commerce High School
- Mar. 2018 ● Opening of Yagisawa Tunnel of Prefectural Road No. 12 Haramachi—Kawamata Line
- Apr. 2018 ● Resumption of “Umenoka”, an intensive care home for the elderly
- Dec. 2018 ● Reopening of Yosshi-i Land, a long-term care health facility
- Dec. 2018 ● Opening of public-founded commercial facility “Odaka Store”
- Jan. 2019 ● Opening of Odaka district revitalization hub facility “Odaka Exchange Centre”
- Mar. 2020 ● Full-scale opening of Fukushima Robot Test Field
- Apr. 2020 ● Opening of Odaka Certified Childcare Centre
- Apr. 2021 ● Opening of Odaka Children's Playground “NIKO Park”
- Dec. 2021 ● Opening of Odaka Clinic
- Jul. 2023 ● Opening of Odaka Horticultural Park
- Apr. 2024 ● Opening of TSUMUGI Future Agriculture Exchange Space
- Apr. 2020 ● Opening of Mirai Agriculture School [Photo]



(Odaka District, etc.) Residential rate 64.4%

## Namie Town

- Mar. 2017 [Evacuation order lifted excluding the Difficult-to-return Zone]
- Mar. 2017 ● Opening of Namie Clinic within the town
- Apr. 2017 ● Reopening of Namie Station on JR Joban Line
- Dec. 2017 [Certification of the Plans for the Specified Reconstruction and Revitalization Base Areas of Namie Town]
- Apr. 2018 ● Opening of elementary, junior high schools and certified childcare centres
- Mar. 2020 ● Opening of Fukushima Hydrogen Energy Research Field
- Mar. 2021 ● Grand opening of Michi-no-Eki (Roadside Station) “Namie”
- Aug. 2021 ● Grand opening of public accommodation facility “Ikoi no Mura Namie”
- Oct. 2021 ● Opening of Disaster Remains: Namie Municipal Ukedo Elementary School
- Jun. 2022 ● Opening of complex facility “Furui Centre Namie”
- Mar. 2023 [Evacuation order lifted in the Specified Reconstruction and Revitalization Base Areas]
- Apr. 2023 ● Opening of Fukushima Institute for Research, Education and Innovation (F-REI) [Photo]
- Oct. 2023 ● Opening of Namie Dispensary
- Jan. 2024 [Certification of the Plans for the Reconstruction and Revitalization of Specified Living Areas for Returnees of Namie Town]
- Apr. 2024 ● Opening of Namie Town Disaster Prevention Exchange Centre



Residential rate 15.5%

## Futaba Town

- Sep. 2017 [Certification of the Plans for the Specified Reconstruction and Revitalization Base Areas of Futaba Town]
- Sep. 2019 ● Experimental cultivation of spinach and other vegetables began in Morotate District
- Mar. 2020 [Evacuation order lifted, excluding the Difficult-to-return Zone]
- Mar. 2020 ● Reopening of Futaba Station on JR Joban Line
- Sep. 2020 ● Opening of The Great East Japan Earthquake and Nuclear Disaster Memorial Museum
- Oct. 2020 ● Opening of Futaba Business Incubation and Community Centre
- Aug. 2022 [Evacuation order lifted in the Specified Reconstruction and Revitalization Base Areas]
- Feb. 2023 ● Opening of Futaba Town clinic
- Apr. 2023 ● Grand Opening of “Futaba Super Zero Mill”
- Sep. 2023 [Certification of the Plans for Reconstruction and Revitalization of Specified Living Areas for Returnees of Futaba Town]
- Mar. 2024 ● Reopening of Futaba Post Office
- Apr. 2024 ● MOU signed with AEON TOHOKU co., ltd. for commercial facility development
- Jun. 2024 ● All 86 units of “Ekinishi” Public Housing Complex completed [Photo]
- Nov. 2024 ● Opening of Futaba Town Immigration and Settlement Consultation Centre



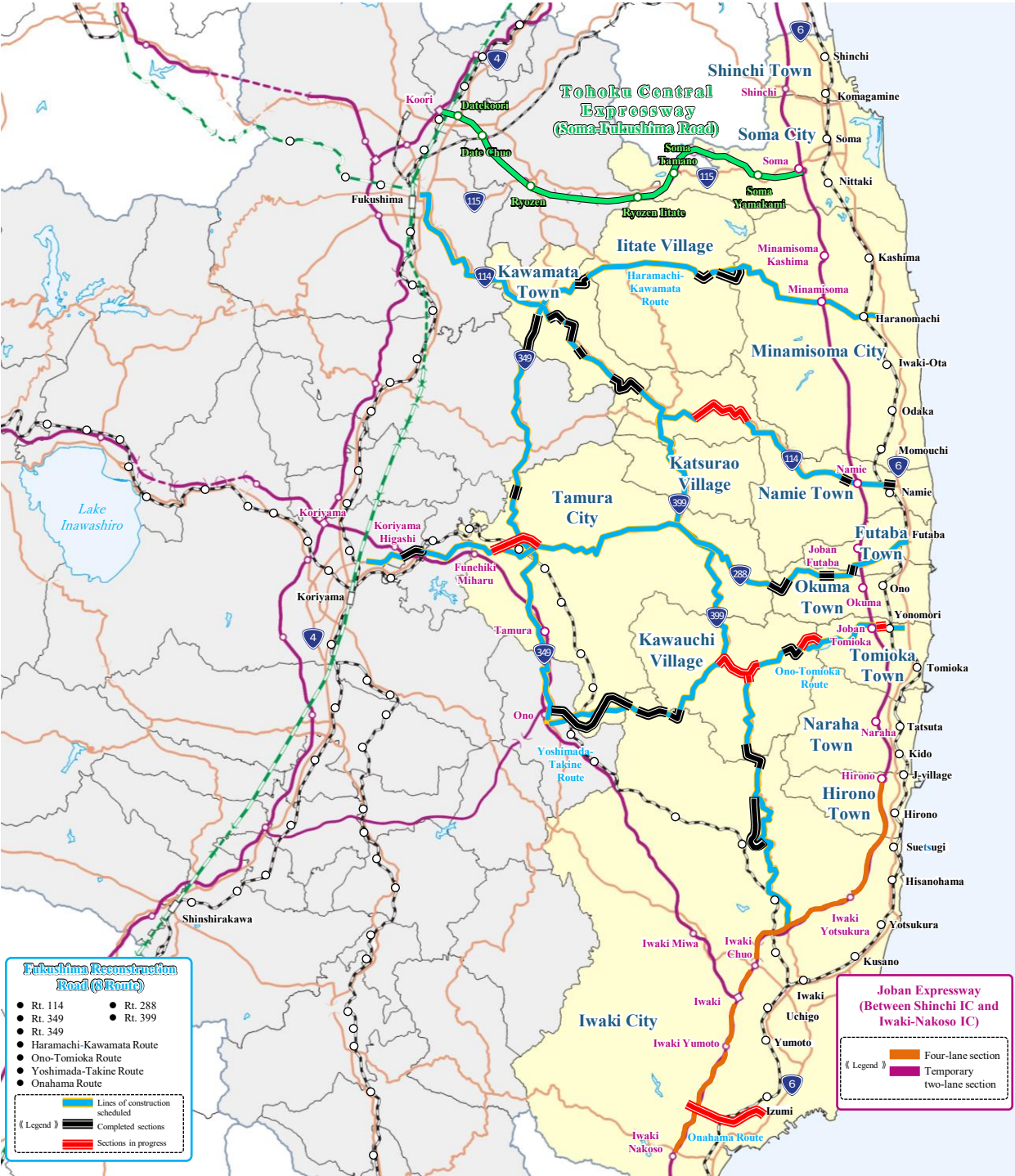
Residential rate 3.4%

## Okuma Town

- Nov. 2017 [Certification of the Plans for the Specified Reconstruction and Revitalization Base Areas of Okuma Town]
- Apr. 2019 [Evacuation orders lifted excluding the Difficult-to-return Zone]
- Apr. 2019 ● Completion of New Town Hall in Ogawara District
- Aug. 2019 ● First shipment from Nexus Farm Okuma strawberry farm
- Mar. 2020 ● Reopening of Ono Station on JR Joban Line
- Apr. 2020 ● Opening of group home for the elderly “Okuma Mominoki-en”
- Feb. 2021 ● Opening of Okuma Town clinic
- Apr. 2021 ● Opening of commercial facility “Okumart”
- Oct. 2021 ● Opening of accommodation facility with hot spring “Hot Okuma” and a community facility “Linkru Okuma”
- Apr. 2022 ● Opening of an integrated elementary and junior high school for compulsory education in Aizuwakamatsu City
- Jun. 2022 [Evacuation order lifted in the Specified Reconstruction and Revitalization Base Areas]
- Jul. 2022 ● Opening of Okuma Incubation Centre for start-ups
- Jul. 2022 ● Opening of National Road Route 288 Nogamikotsuka construction section
- Apr. 2023 ● Okuma Municipal “Manabiya Yumenomori” (compulsory education school and certified childcare centre) opened within the town, later moved into a new school building in August at the same year
- Sep. 2023 [Certification of the Plans for Reconstruction and Revitalization of Specified Living Areas for Returnees of Okuma Town]
- Mar. 2024 ● Grand opening of “CREVA Okuma” industrial exchange facility, “Kuma SUN Terrace” commercial facility and a station-front square, in Ono Station west. [Photo]



Residential rate 8.9%



## Katsurao Village

- Jun. 2016 [Evacuation order lifted excluding areas with the Difficult-to-return Zone]
- Nov. 2017 ● Resumption of medical services at Katsurao Village Clinic
- Apr. 2017 ● Reopening of Maruichi Store
- Jul. 2017 ● Reopening of Ishii Shokudo restaurant, Yamazaki Y Shop Yamasa
- Apr. 2018 ● Resumption of kindergartens, elementary and junior high schools within the village
- May 2018 [Certification of the Plans for the Specified Reconstruction and Revitalization Base Areas of Katsurao Village]
- Jun. 2018 ● Opening of Katsurao village community revitalization centre “Azalea”
- Jun. 2022 [Evacuation order lifted in the Specified Reconstruction and Revitalization Base Areas]
- Mar. 2024 ● Restaurant Masa tavern opened at Katsurao Village Accommodation & Exchange Facility Sesaragi-so [Photo]



Residential rate 37.8%

## Tamura City

- Jul. 2011 ● Resumption of medical service at Miyakoji Clinic and Dental Clinic
- Mar. 2012 ● Reopening of Miyakoji Madoka-So, an intensive care home for the elderly
- Apr. 2014 [Evacuation order completely lifted]
- Apr. 2014 ● Reopening of elementary and junior high schools within Miyakoji Machi
- Apr. 2014 ● Opening of a publicly-funded commercial facility “Domo”
- Mar. 2016 ● Opening of confectionery “Miyakoji Sweets Yui”
- Apr. 2017 ● Opening of Miyakoji Elementary School
- Jul. 2019 ● Opening of Tamura Municipal Hospital
- Apr. 2023 ● Opening of Ohisama Dome
- Jun. 2024 ● Opening of Challenge House Miyakoji [Photo]
- Oct. 2024 ● Completion of Tamura City Eastern Industrial Park (Yamane Area, Tokiwa Town)



(Miyakoji District) Residential rate 86.7%

## Kawauchi Village

- Apr. 2012 ● Reopening of the municipal health, welfare and medical facility “Yufune”
- Apr. 2012 ● Reopening of elementary and junior high schools, nurseries within the village
- Oct. 2014 [Evacuation order lifted for the Preparation Area for Lift of Evacuation Orders]
- Nov. 2015 ● Opening of “Kawauchi”, an intensive care home for the elderly
- Mar. 2016 ● Opening of commercial facility “Shopping Centre YO-TASHI”
- Apr. 2016 ● Opening of “Moritaro Pool” [Photo]
- Jun. 2016 [Evacuation order completely lifted]
- Apr. 2021 ● Opening of an integrated elementary and junior high school
- Apr. 2021 ● Opening of a certified daycare centre
- Jun. 2021 ● Opening of “Kawauchi Winery”
- Nov. 2024 ● Opening of Craft Gin Distillery “naturadistill”



Residential rate 83.5%

## Hirono Town

- Aug. 2011 ● Reopening of Baba Clinic
- Jan. 2012 ● Reopening of Hirono Pharmacy
- Mar. 2012 [Return of Town Hall, lifting of mayor's evacuation order] (Emergency Evacuation Preparation Zone (national designation) lifted on 30 Sep. 2011.)
- Apr. 2012 ● Reopening of “Hanabusasen”, an intensive care home for the elderly
- Aug. 2012 ● Reopening of elementary and junior high schools within the town
- Apr. 2015 ● Opening of Futaba Future High School
- Mar. 2016 ● Grand opening of a commercial facility, “Hirono Terrasse”
- Apr. 2019 ● Opening of Futaba Future Junior High School
- Apr. 2019 ● Opening of a certified childcare centre
- Apr. 2019 ● Grand opening of J-Village
- Mar. 2022 ● Elevator installed on Bridge to the Future
- Mar. 2023 ● Developed Higashi-machi Industrial Park
- May 2023 ● Developed East side of Hirono Station (Hirono Station East New Town) [Photo]
- Sep. 2023 ● Elevator installed inside Hirono Station



Residential rate 91.3%

## Iwaki City

- Apr. 2017 ● Opening of Iwaki Green Base
- Jul. 2017 ● Opening of Iwaki FC Park
- Jun. 2018 ● Grand opening of “AEON Mall Iwaki Onahama”
- Dec. 2018 ● Establishment of Iwaki Medical Centre
- Sep. 2019 ● Training camp for Samoa national team for Rugby World Cup
- May 2020 ● Opening of Iwaki 3.11 Memorial and Revitalization Museum [Photo]
- Apr. 2022 ● Operation of the largest domestic wood biomass power generation
- Sep. 2022 ● Opening of National Road Route 399 Jyunonji construction section
- Nov. 2022 ● Iwaki FC won J3 championship and promoted to J2
- Apr. 2023 ● Establishment of Iwaki Office of Fukushima Institute of Research, Education and Innovation (F-REI)
- Dec. 2024 ● CIFAL Japan International Training Centre established



Residential rate 69.9%

## Naraha Town

- Jun. 2014 ● Reopening of Tatsuta Station on JR Joban Line
- Sep. 2015 [Evacuation order completely lifted]
- Feb. 2016 ● Establishment of Futaba Medical Centre-affiliated Futaba Revitalization Clinic
- Mar. 2016 ● Reopening of “Lily Garden”, an intensive care home for the elderly
- Apr. 2017 ● Reopening of elementary, junior high schools and certified childcare centres within the town
- Jul. 2018 ● Grand opening of “Kokonara Shopping Mall” and “Naraha CANvas”
- Jul. 2018 ● Partial reopening of J-Village
- Apr. 2019 ● Opening of an indoor sports facility, “Naraha Sky Arena”
- Apr. 2019 ● Grand opening of J-Village
- Apr. 2019 ● Reopening of a hot-spring and health facility at Michi-no-Eki (Roadside Station) “Naraha”
- Jun. 2020 ● Reopening of Michi-no-Eki Naraha Product Promotion Centre
- Jun. 2020 ● Reopening of Naraha Pharmacy
- Jun. 2022 ● Opening of “CODOU”, a support centre for relocation and living
- Apr. 2023 ● Opening of Community Activity Centre “Mazarasse” [Photo]
- Jan. 2025 ● Futaba Support School relocated to a new building



## Tomioka Town

- Mar. 2017 ● Grand Opening of “Sakura Mall Tomioka”
- Apr. 2017 [Evacuation orders lifted, excluding the Difficult-to-return Zone]
- Oct. 2017 ● Reopening of Tomioka Station on JR Joban Line
- Mar. 2018 [Certification of the Plans for the Specified Reconstruction and Revitalization Base Areas of Tomioka Town]
- Apr. 2018 ● Opening of Futaba Medical Centre-affiliated [Photo]
- Apr. 2018 ● Resumption of elementary and junior high schools within the town
- Mar. 2020 ● Reopening of Yonomori Station on JR Joban Line
- Jul. 2021 ● Opening of Fukushima 12 Municipalities Relocation Support Centre
- Jan. 2022 [Eased entry restrictions in the Specified Reconstruction and Revitalization Base Areas]
- Apr. 2022 ● Opening of Co-living Support Centre “Sakura no Sato”
- Apr. 2022 [Commencement of preparatory accommodations for the lifting of evacuation orders]
- Apr. 2023 [Evacuation order lifted in the Specified Reconstruction and Revitalization Base Areas]
- Jun. 2023 ● Opening of “Hamafuku Tomioka”, a home care facility that provides regular and on-demand home visits
- Sep. 2023 ● Opening of “TomiokaWorkingBase” satellite office
- Nov. 2023 [Lifting of evacuation order for cemeteries and meeting places (specific sites) as well as access routes (specific routes)] in the Difficult-to-return Zone
- Feb. 2024 [Certification of the Plans for Reconstruction and Revitalization of Specified Living Areas for Returnees of Tomioka Town]



Residential rate 22.9%