

Fukushima

Brochure

Welcome to Fukushima Japan

ふくしま



English

Welcome to Fukushima!

Fukushima Prefecture is in the southernmost part of the Tohoku region and is located just a short distance from the Tokyo metropolitan area, making it a gateway to Tohoku. It has the third-largest land area of any prefecture in Japan and is divided into three regions—Aizu, Central, and Coastal—each with its own climate. Fukushima Prefecture was devastated by the Great East Japan Earthquake and the nuclear disaster but is making steady progress towards revitalization. We invite you to learn about the revitalization efforts to date, the challenges we are taking on, and to discover the delicious food, hot springs, nature, and traditional culture of Fukushima Prefecture.

80 minutes from Tokyo



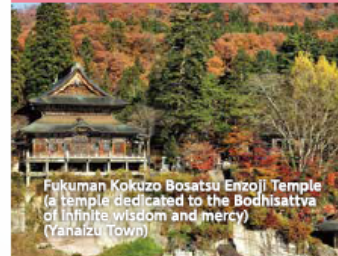
- Car** Approx. 3 hours: Tokyo via the Metropolitan Expressway Inner Circular Route (CI) → Koriyama IC, Fukushima
- Plane** Approx. 1 hour and 35 minutes: New Chitose Airport, Sapporo → Fukushima Airport
Approx. 1 hour: Itami Airport, Osaka → Fukushima Airport
- Train** Approx. 80 minutes: Tokyo Station, Tokyo → Koriyama Station, Fukushima via JR Tohoku Shinkansen
Approx. 2 hours and 15 minutes: Tokyo Station, Tokyo → Iwaki Station, Fukushima via JR Limited Express Hitachi
Approx. 3 hours and 10 minutes: Asakusa Station, Tokyo → Aizu-Tajima Station, Fukushima via Tobu Limited Express Liberty Aizu

More detailed information about access to Fukushima: FUKUSHIMA TRAVEL website



Aizu Region

Rich nature and history



Fukuman Kokuzo Bosatsu Enzoji Temple (a temple dedicated to the Bodhisattva of Infinite wisdom and mercy) (Yanaizu Town)

Central Region (Nakadori)

Seasonal blooms, fresh fruit, and easy transport access



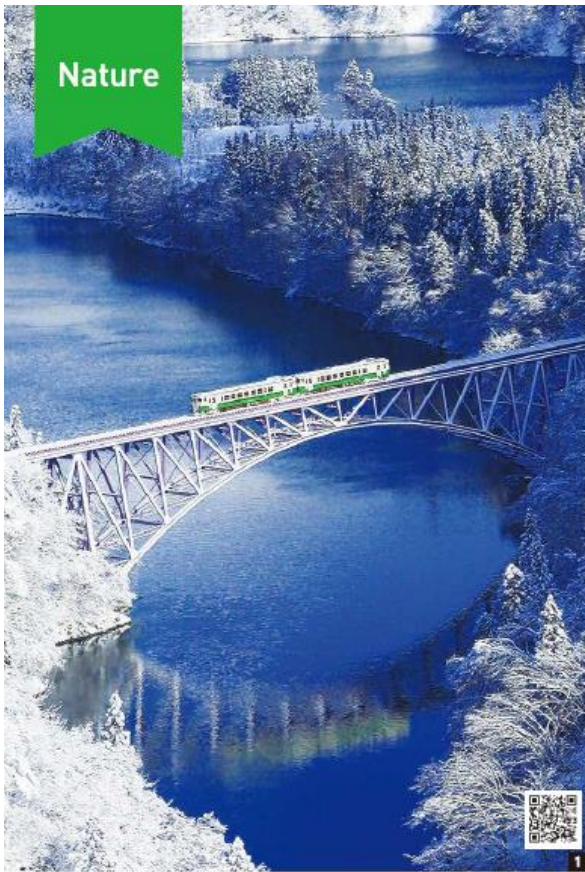
Miharu Takizakura (Miharu Town)

Coastal Region (Hamadori)

A destination with a warm climate, steadily advancing towards revitalization.



Bentenjima Island off Hattachi Beach (Iwaki City)



1 JR Tadami Line [Mishima Town]

The Tadami Line, fully reopened in 2022 after being damaged by torrential rains in July 2011, is a hidden route offering breathtaking seasonal scenery.

2 Hanamiyama [Fukushima City]

A famous flower spot, where plum and cherry blossoms bloom in abundance. A renowned photographer has described its beauty as "a spring utopia".

3 To-no-Hetsuri (River Gorge) [Shimogo Town]

A scenic area where cliffs and steep slopes rise like towers, formed by millions of years of erosion and weathering.

4 Goshikinuma five-coloured lakes [Kitashiobara Village]

30 lakes of varying sizes and colours, each displaying a vibrant palette that changes with the weather and the seasons.

5 Abukuma Cave [Tamura City]

One of the most renowned limestone caves in Japan, famous for its impressive length of 4,218.3 metres, of which 600 metres are open to the public and feature a wide variety of stalactites.

6 Soma Nomaai Festival [Soma City & Minamisoma City]

With a history spanning more than 1,000 years, this festival features the thrilling Armoured Horse Race and Sacred Flag Competition, with around 400 riders. These events unfold over the course of three days in the month of May.

7 Sazae-do [Aizuwakamatsu City]

Designated as a National Important Cultural Property, it has a curious spiral structure that allows visitors to ascend and descend without passing each other.

8 Shiramizu Amidado Temple [Iwaki City]

Built in 1160, this national treasure building is surrounded by trees that create stunning seasonal scenery.

9 Hinoemata Kabuki [Hinoemata Village]

This Kabuki tradition has been passed down by the villagers of Hinoemata for over 280 years since the Edo period, and is performed three times a year.

10 Ouchi-juku [Shimogo Town]

An old post town featuring thatched-roof streets. This area is included in the list of Important Preservation Districts for Groups of Traditional Buildings.



- 11 Ashinomaki Onsen in Aizu [Aizuwakamatsu City]** A hot spring with a rich history of over 1,000 years, offering breathtaking seasonal canyon views and renowned for its therapeutic benefits for neuralgia and eye ailments.
- 12 Bandai Atami Onsen [Koriyama City]** This hot spring resort is located in Koriyama City, in the centre of Fukushima Prefecture. Known as the "beauty hot spring", it is famous for its skin-smoothing properties.
- 13 Iwaki Yumoto Onsen [Iwaki City]** One of the three oldest hot springs in Japan, this onsen has numerous benefits, including promoting beautiful skin and relieving high blood pressure.

Fukushima Onsen Guidebook (Japanese only)



- 14 Peaches** A wide range of varieties can be enjoyed from July to September, depending on the harvest schedule. The "Akatsuki" variety is the most renowned.
- 15 Yuyake Berry (evening glow)** The prefecture's original strawberry, which can be harvested early to decorate Christmas and New Year celebrations, is characterised by its exceptional sweetness.
- 16 Fukushima vegetables&fruits** A wide variety of vegetables and fruits are cultivated, including cucumbers and tomatoes, which are among the leading produce items in Japan.
- 17 Negi-Soba (or green onion & soba)** A speciality of Ouchi-juku. It involves using a stick of green onion as chopsticks to eat soba noodles, and nibbling on it as a condiment adds a delightful flavour.
- 18 Kitakata Ramen [Kitakata City]** One of Japan's three top ramen types, these flat noodles are made by adding extra water to the dough and letting it rest well, and are characterised by their broad, slightly curly shape.
- 19 Enban Gyoza [Fukushima City]** This is a hearty dish, consisting of fried gyozas filled with vegetables which are arranged in the shape of a disk.
- 20 Joban catch (Joban-mono)** Seafood caught in the convergence of the Oyashio and Kuroshio currents, renowned for its variety, quality, and flavour, is known as "Joban catch".
- 21 Cream Box [Koriyama City]** This local delicacy hails from Koriyama City, featuring a soft bread topped generously with a sweet, milk-flavoured cream.
- 22 Ika Ninjin** A simple local delicacy made by flavouring silvered squid and carrots with sake, soy sauce, mirin, and other ingredients.
- 23 Fukushima rice** Ranking as the sixth-largest rice-producing prefecture in the country, its original variety, "Fuku Warai", is recognised as the highest quality rice among all.



Sake

Sake
The sake from Fukushima is exceptionally delicious, having won 18 gold prizes at the Annual Japan Sake Awards 2024.

Great rice, great water and great people.

Received the first brewing license for exporting sake in Japan

Export only sake "Ryusho"

Fukushima Sake Story

Brewery Tours

Fukushima Prefecture has a rich history of sake brewing, with some breweries operating for over 300 years. There are more than 60 breweries, many of which offer tours to visitors.
(*Some breweries may require advance booking, and several offer tours in English.)

For availability of brewery tours, telephone numbers, etc.

[Source] Sendai Regional Taxation Bureau

Crafts

- 24 Shirakawa Daruma [Shirakawa City]**
Traditional folk art from Shirakawa City, serving as a lucky charm adorned with auspicious symbols, including cranes, turtles, pine trees, bamboo, and plum blossoms.
- 25 Obori Soma Ware [Namie Town, etc.]**
A nationally designated traditional pottery craft from the Obori area in Namie Town, which was disrupted due to forced evacuation, is now being revitalized in the town.
- 26 Akabeko [Yanaizu Town & Aizuwakamatsu City]**
A traditional craft from Aizu. Inspired by the legend of the red cow at a temple dedicated to Fukuman Kokuzo Bosatsu, the Bodhisattva of infinite wisdom and mercy, famously known as the cow that brings good fortune.

Experience

- 27 Peach picking**
Savour the delightful summer taste of fresh, sweet peaches in the orchards, enjoyed mainly in the Central Region.
- 28 Akabeko painting**
Design a world's one-and-only Akabeko inspired by the Aizu Region, capturing the essence of your journey as a special memento.

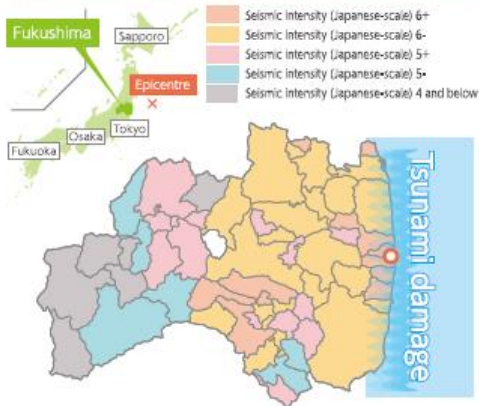


11 March 2011, 14:46
Great East Japan
Earthquake
Magnitude 9.0



Source: FUKUSHIMA-MINPO CO., LTD.

Epicentre and Seismic Intensity in Various Locations within the Prefecture



Human Casualties as of 1 August 2024

4,177 fatalities
of which **2,346** were indirect

* Indirect disaster-related fatalities refer to those people who died not as a direct result of the earthquake but for reasons including poor health or extreme fatigue resulting from their evacuation.

Total Number of Damaged Housing as of 1 August 2024

Totally Destroyed	15,483
Partially Destroyed	83,640

Comparison of the Situation Immediately after the Earthquake to the Situation Today

Following the tremors and the tsunami caused by the Great East Japan Earthquake, significant damage resulted in various areas of Fukushima Prefecture. Core infrastructure and transport networks were severed, and many buildings and other structures were damaged, but reconstruction work is currently ongoing, with almost all of the work completed.

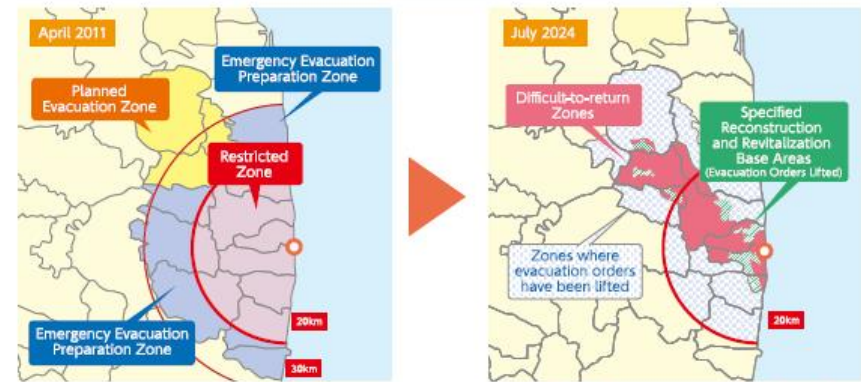


Changes in Evacuees and Evacuation Areas

As a result of the nuclear disaster, the vicinity of Fukushima Daiichi Nuclear Power Station was designated as an evacuation zone, forcing residents to evacuate to locations both within and outside the prefecture. Even some residents outside the Evacuation-Designated Zones chose to evacuate voluntarily for a variety of reasons, including concerns about radiation. However, evacuation orders have been lifted in recent years for all areas excluding the Difficult-to-return Zones, and steady progress is being made toward their reconstruction and revitalization.



Source: Monthly Reports of the "Preliminary Report on the Damage Caused by the Earthquake in the Pacific Ocean of the Coast of The Tohoku Region in 2011", issued by the Fukushima Prefecture Disaster Countermeasures Task Force



Between April 2011 and July 2024, the restricted areas have decreased from approx. **12%** to approx. **2.2%** or Fukushima Prefecture's total area



▲ Decontamination of homes (removal of deposited material)

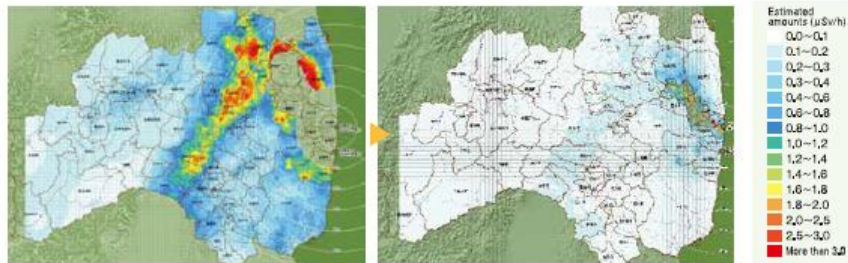


▲ Decontamination of agricultural land (deep ploughing)

State of Post-disaster Environmental Recovery

As air dose rates in Fukushima Prefecture have significantly decreased due to decontamination efforts and the natural decay of radioactive materials, they are now comparable to those in major cities around the world. *Decontamination was completed by March 2018 (excluding the Difficult-to-return Zones).

Transition of Air Radiation Dose Rates in the Prefecture



▲ Measurements for the period 12 April through 16 April 2011

▲ Measurements taken from 10 April to 9 May 2023

*Results of a car-borne survey conducted in the Difficult-to-return Zones between 11 Sep. and 30 Oct. 2023 were added to the measurements

Source: Steps for Revitalization in Fukushima

Comparison with Other Locations Around the World

The amount of airborne radiation in Fukushima Prefecture is roughly the same as for major cities overseas (with the exception of the designated evacuation areas)



Source: Steps for Reconstruction and Revitalization in Fukushima Prefecture

Results of the Inspections of All Bags of All Harvested Vegetables, Fruit, Livestock Products, etc.

1 April 2023 through 31 March 2024

All agricultural, forestry, and fisheries products produced in Fukushima Prefecture are inspected prior to shipment to ensure their safety. Items that exceed the standard values are restricted for shipment by the municipality and are not distributed to the market.

Classification	Total No. of samples	No. of samples exceeding standard limits
Brown Rice #1	424	0
Vegetables & Fruits	1,875	0
Livestock Products	1,716	0
Cultivated Edible Plants & Mushrooms	552	0
Marine and Aquaculture Products	3,366	0
Wild Edible Plants & Mushrooms	401	0
Freshwater Products (Rivers, Lakes, and Ponds)	153	0

[Reference]

Safety standard limits for radioactive cesium in food (Food Sanitation Law) (Bq/kg)

Classification	Japan	EU	U.S.A	CODEX
General foods	100	100	1,250	1,000
Milk	50	1,250	1,250	1,000
Infant foods	50	1,250	1,250	1,000
Drinking water	10	1,000	1,000	1,000

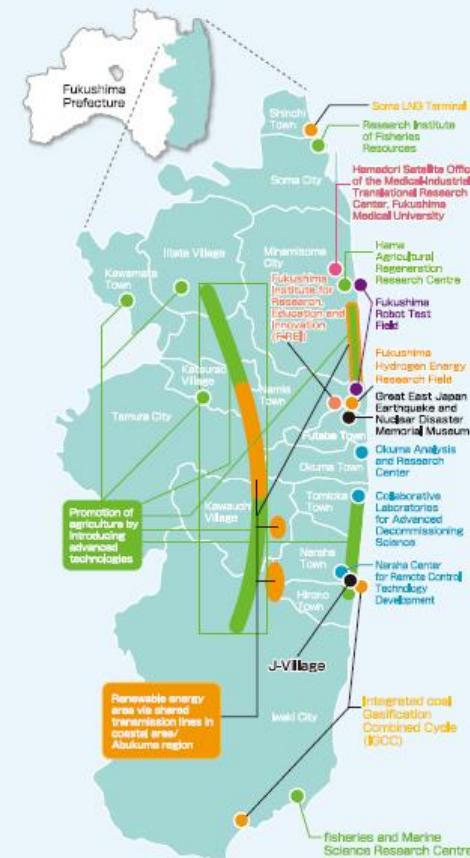
#1 While inspections of all grains of all bags (blanket inspection) had been implemented for brown rice throughout the prefecture until the 2019 rice harvest, this practice transitioned to monitoring starting from the 2020 rice harvest, except for the municipalities that were subject to evacuation orders. Therefore, the number of brown rice samples aligns with those undergoing monitoring. Currently, the blanket inspections are implemented only in 3 municipalities, with no samples exceeding the standard limit. #2 International food standards

Source: Steps for Reconstruction and Revitalization in Fukushima Prefecture

To the Future Fukushima

Fukushima Innovation Coast Framework

This is a national project that aims to revitalize industries in the coastal region affected by the Great East Japan Earthquake and the nuclear disaster through the establishment of a new industrial base in the region. Based on the 3 core pillars, "A region where people can take on any challenge", "Local companies are major players", "Fostering human resources who will play a major role in the initiative", the project is being put into shape in the coastal region in the six priority fields. It also includes various infrastructure development initiatives to achieve these plans, such as clustering of industries, fostering human resources, increasing people visiting the region, spreading information, and re-establishing the living environment.



Six Major Projects

Decommissioning

To move forward with the decommissioning of the nuclear power plant, the Framework draws upon domestic and international wisdom to promote research and development.



Robots & Drones

The Framework is integrating robotics industry with the Fukushima Robot Test Field positioned as its core.



Energy, Environment, and Recycling

The Framework is working to establish cutting-edge renewable energy and recycling technologies.



Agriculture, Forestry, and Fisheries

The Framework aims to revitalize agriculture, forestry and fisheries using ICT and robotics



Medicine

The Framework supports technological development to develop corporate sales channels.



Aerospace

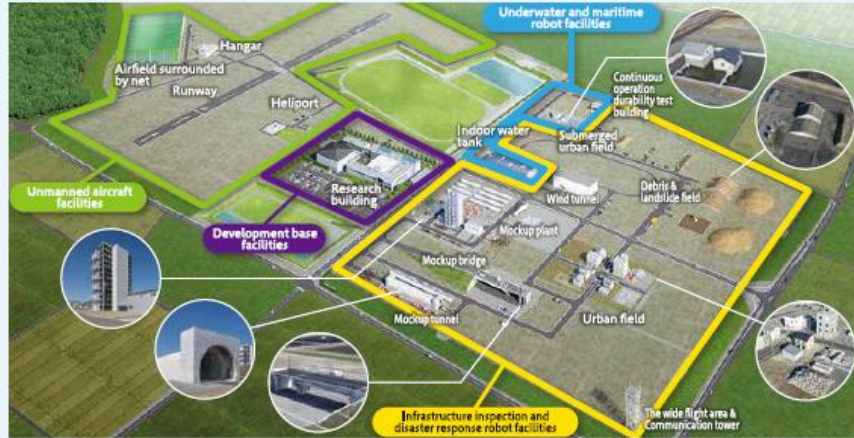
The Framework is working on development of the next generation air mobility and expansion of business of local companies.



Robotics-related Industries

Fukushima Robot Test Field Minamisoma City & Namie Town

The Fukushima Robot Test Field is one of the first bases in the country where researchers test robots used in distribution, infrastructure inspection, disaster response and more for demonstration tests, standard regulations and product certification, etc.



Copyright © 2017 Fukushima Prefecture. All Rights Reserved.

Agriculture, Forestry and Fisheries Industries

Supporting the development of agriculture, forestry and fisheries industries utilising ICT and robotic technologies, as well as the creation of new employment opportunities and the entry of businesses from other regions and sectors

A Production System Aimed at the Revitalization of Agriculture

Development and Promotion of Advanced Technologies in the Fisheries Industry

<p>Berg Fukushima</p> <p>Kawamata Town</p> <p>Engaging in the production and sale of vegetable seedlings utilizing growing propagation and plant vascularization technology.</p>	<p>Fukushima Shirohato Farm</p> <p>Naraha Town</p> <p>With a dedicated storage facility equipped for sweet potatoes, the company grows and sells rare sweet potato seedlings, promoting the production of sweet potatoes as a local specialty.</p>	<p>Cropland Corporation Chi-No</p> <p>Namie Town & Iitate Village</p> <p>Utilising drone technology for direct-seeded rice cultivation, efficiently producing plastic raw materials and rice for export.</p>	<p>Fukushima Prefectural Fisheries and Marine Science Research Centre</p> <p>Iwaki City</p> <p>A research facility of Fukushima Prefecture equipped with a radiation research building to support the recovery and revitalization of the fisheries industry.</p>	<p>Fukushima Prefectural Research Institute of Fisheries Resources</p> <p>Soma City</p> <p>A core facility of Fukushima Prefecture dedicated to the production and supply of aquaculture stock, as well as research on coastal fishery resources, to support the revitalization of coastal fisheries.</p>
---	---	---	---	--

Medical-related Industries

Fukushima Prefecture is one of Japan's leading regions for the production of medical devices. Research and development is underway at local universities, and a large number of major medical device manufacturers and local production facilities. In addition, the Fukushima Medical Device Development Support Center was opened in 2016 as the country's first-ever centre for the provision of integrated support for the series of processes encompassing the development of medical devices from development through to commercialisation. On top of this, the Fukushima Medical University Fukushima Global Medical Science Center Translational Research Center, which opened in 2016 as a centre for the discovery of various drugs to treat cancer and other conditions, is expected to play a role in forming links between the medical and industrial communities.

<p>Fukushima Medical Device Development Support Center</p> <p>Koriyama City</p>	<p>Fukushima Medical University Fukushima Global Medical Science Center Translational Research Center</p> <p>Fukushima City</p>
--	--

Energy, Environment, and Recycling

Fukushima Prefecture is expanding the adoption of renewable energy with the goal of generating renewable energy equivalent to 100% or more of the prefecture's energy demand by around the year 2040, and is also working to develop and cluster related industries through measures such as the development of hubs.

Renewable Energy-related Facilities in the Prefecture

<p>Fukushima Renewable Energy Institute, AIST (FREA)</p> <p>Koriyama City</p> <p>National Institute of Advanced Industrial Science and Technology (AIST) developed an R&D hub for renewable energy, which opened on 1 April 2014. Smart System Research Building started operation on 1 April 2016.</p> <p>Source: National Institute of Advanced Industrial Science and Technology</p>	<p>Tsuchiyu onsen Hot Spring Binary Power Plant</p> <p>Fukushima City</p> <p>Source: Genki Up Tsuchiyu Co. Ltd.</p>
<p>Green Power Aizu Woody Biomass Power Plant</p> <p>Aizuwakamatsu City</p> <p>Source: Green Hatsuden Aizu Co. Ltd.</p>	<p>Mt. Shinobu/Entogataki Falls/Otama Daitchi Small Hydroelectric Power Plant</p> <p>Otama Village</p> <p>Source: Shirobuyama Fukushima Power Co. Ltd.</p>
<p>Abukuma/Coastal Area Shared Transmission Line Project</p> <p>Tamura City</p> <p>In the Abukuma Mountains and the Coastal Region, support is being provided for the adoption of approximately 600MW of renewable energy power generation facilities, and approximately 86.02km of shared power transmission lines and related facilities were completed in July 2024.</p> <p>Shared power transmission line network in service</p> <p>Source: Fukushima Power Transmission Co., Ltd.</p>	<p>Koriyama NunobikiKogen Wind Farm</p> <p>Koriyama City</p> <p>Source: J-POWER (Electric Power Development Co. Ltd.)</p>
<p>Fukushima Airport Megasolar</p> <p>Sukagawa City & Tamakawa Village</p> <p>Source: Fukushima Electric Power Co. Ltd.</p>	<p>Fukushima Hydrogen Energy Research Field (FH2R)</p> <p>Namie Town</p> <p>Opened in Namie Town on 7 March 2023, it is one of the world's leading demonstration sites for hydrogen production using renewable energy sources (20MW of solar power). It is capable of producing 1,200Nm³ per hour (rated) of hydrogen, enough to power approximately 560 fuel-cell vehicles per day.</p>
<p>Fuel Cell Bus/ Fuel Cell Vehicle</p> <p>A total of 481 fuel cell vehicles, including official vehicles of the prefectural government, have been registered within the prefecture (as of the end of May 2024). Fuel cell buses are in service with Iwaki City and between Fukushima City and Kamama. Some additional vehicles have been ordered and operation in Namie Town in April 2023.</p> <p>Fukushima City, Iwaki City</p> <p>Next in February</p>	<p>Hydrogen Stations</p> <p>Five stationary stations (with six dispenser) and one mobile station (inserted in two occasions) are currently in operation. Recently, in May 2024, a large-scale stationary outdoor capable of servicing large commercial vehicles was opened in Motomiya City.</p> <p>Iwaki City, Koriyama City, Fukushima City, Namie Town, Motomiya City</p>

To the Journey to Experience the Fukushima Today



Fukushima Prefecture is the only place in the world to have experienced the "compound disaster" of an earthquake, tsunami and nuclear accident. Hope Tourism refers to an educational journey that fosters personal growth by witnessing the unfiltered reality of Fukushima and engaging in dialogue with its resilient residents. Through this journey, participants reflect on the path to revitalization and explore ways to overcome such adversity. We actively share the lessons and memories of the region's disaster experience both domestically and internationally.

The Journey to Experience the Fukushima Today Hope Tourism



1 The Great East Japan Earthquake and Nuclear Disaster Memorial Museum

This facility is truly the entry point for Hope Tourism. A wealth of resources, including images and exhibits, give visitors a complete picture of the events and revitalization efforts from the immediate aftermath of the earthquake and nuclear accident to the present day.

This facility was constructed to share records and lessons from the unprecedented compound disaster and subsequent revitalization efforts with people in Japan and around the world, and pass them on to future generations. It aims to convey the unique experience of the nuclear disaster in Fukushima, by collecting, archiving and researching information on the revitalization efforts to date. It also aims to pass on the experience to future generations without letting it fade away, and to share it with the rest of the world. The museum has numerous exhibits that showcase a variety of resources, actual records, images and more, allowing visitors to learn about developments from the immediate aftermath of the earthquake and nuclear accident to the present day and the course of revitalization efforts.

The Great East Japan Earthquake and Nuclear Disaster Memorial Museum



Facility Overview

- 1. Prologue**
Learn about life in the region before the quake, the disaster after, and efforts being made through images projected onto seven floors.
- 2. Beginnings of the Disaster**
Trace in chronological order the time before the disaster, when it happened, and the immediate aftermath.
- 3. The Immediate Response to the Nuclear Power Station Accident**
Look back on the situation immediately after the nuclear power plant accident and its distribution cooperation with the help of television and other information.
- 4. The Voices of Fukushima**
Share the feelings of residents of the prefecture who lived through this unprecedented disaster through their letters, journals, photographs, and other artifacts.
- 5. The Long-term Impact of the Nuclear Disaster**
Learn about the impact of the prolonged nuclear disaster and responses to it through materials, exhibitions, and more.
- 6. Striving for Revitalization**
Learn how Fukushima Prefecture is overcoming adversity on the path to revitalization.



▲ An exterior appearance that blends into the natural landscape. The rooftop offers a panoramic view of the coast and ocean.



▲ A fire engine damaged by the tsunami is on display.

▲ Visitors can see a diorama of TEPCO's Fukushima Daiichi Nuclear Power Station after the accident.

2 Disaster Remains of Namie municipal Ukedo Elementary School



The only Preserved Disaster Remains in the prefecture that conveys the threat of tsunamis to future generations. Located about 300 metres from the coast, Thanks to the swift judgment of the staff and the cooperation of the children, everyone was miraculously able to evacuate safely. Conditions at the school are almost the same as when the disaster struck.



▲ Photo at the time of the earthquake

Ukedo Elementary School Website



3 J-Village



National Training center

J-Village, the sacred ground for athletes, became the operational base for the nuclear accident response following the Great East Japan Earthquake on 11 March 2011, and subsequently suspended its operations. In 2014, it was resumed as a symbol of Fukushima's revitalization, and has been designated as the fixed venue for boys soccer competition in All Japan High School Sports INTERACT from 2024, lighting the spirit of revitalization in Fukushima Prefecture.



J-Village Website



4 The Historical Archive Museum of Tomioka



This facility tells the story of the everyday life suddenly taken away from the perspective of the residents. Patrol car in which two police officers lost their lives while helping people to evacuate is exhibited among others.

The Historical Archive Museum of Tomioka Website



5 Iwaki 3.11 Memorial and Revitalization Museum



Facility that conveys Iwaki City's experience of the disaster into the future. It also aims to raise awareness of disaster risk and disaster prevention.

Iwaki 3.11 Memorial and Revitalization Museum Website



6 Fukushima Prefectural Centre for Environmental Creation Communication Building Commutan Fukushima

Facility Overview

This facility offers visitors interactive exhibits that help deepen their awareness of Fukushima's environmental recovery and revitalization. Here, they can enjoy learning about Fukushima's current state, radiation, and the environment.

Commutan Fukushima Website




- 1 Fukushima since March 11, 2011**
Footsteps toward the revitalization of Fukushima
- 2 Future Creation Area**
Learn about Fukushima today, and envision the future together!
- 3 Environmental Recovery Area**
Learn about radiation and the research at Centre for Environmental Creation!
- 4 Environmental Creation Area**
Learn about the environment and new energy alternatives to nuclear power.
- 5 Environmental Creation Theatre**
Powerful visuals and sound! A full-spherical dome theatre
- 6 Tangible Earth**
Experience a real-time view of the Earth from space with an interactive globe.

This miniature replica of the Fukushima Daiichi Nuclear Power Station shows the state it was in immediately after the accident.



The "Environmental Creation Theatre", a 360° dome theatre, one of only two in Japan, immerses visitors in a powerful visual and sound experience, giving them a sense of presence.

No. 1 in Japan




Shipment of medical machinery and equipment parts, etc.
25.1 billion yen (2022)
 No. 1 in Japan for 13 consecutive years

No. 2 in Japan




2023 sake brewing year gold prize winners at the Annual Japan Sake Awards
18 brands

No. 2 in Japan



Volume of peaches harvested
28,500 tons (2023)

No. 2 in Japan



Shipment value of lacquered kitchenware and tableware
1.5 billion yen (2021)

No. 4 in Japan



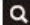
Number of hot springs
125 hot springs (2023)



Fukushima Revitalization Information Portal Site

"Fukushima Revitalization Information Portal Site" is an official portal site that brings together various information related to the revitalization of the prefecture.



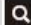
Fukushima Revitalization 



Fukushima Today

Fukushima Prefecture's Coordinators for International Relations showcase the charms of Fukushima from an international perspective through social media.



Fukushima Today 



FUKUSHIMA TRAVEL

Fukushima Prefecture has attractions for every season: spring, summer, autumn, and winter. This site will make you want to visit just by looking at it.



Fukushima Travel 