

We have compiled visual representations to illustrate how the efforts undertaken and ongoing efforts aimed at Fukushima's reconstruction have been shaped.

New Fukushima Revitalization Promotion Headquarters

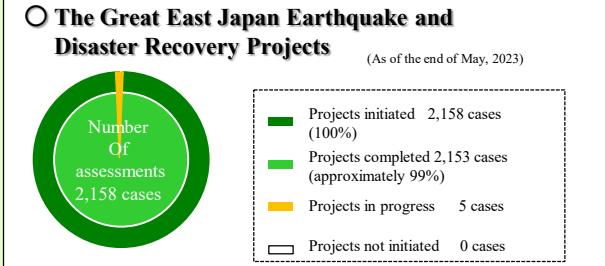
Fukushima Prefectural Government (TEL)024-521-7109

Towards the Realisation of "New Fukushima" - Tracing the path of recovery - (1/2)

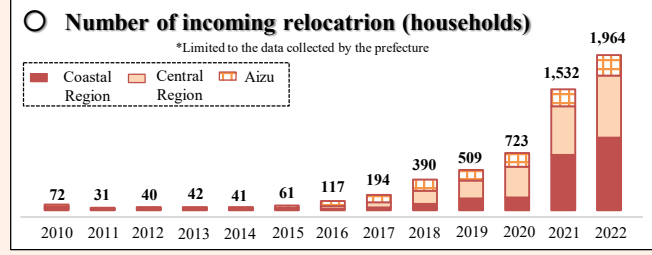
★ ... Related to the Fukushima Innovation Coast Framework

2023.8.22

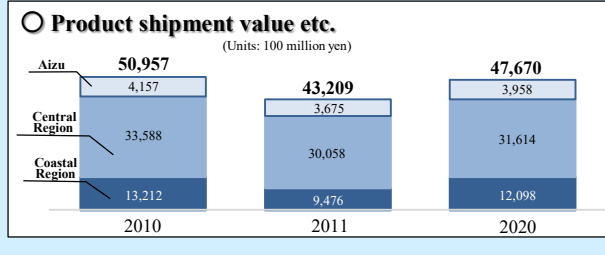
[Living] Realization of a local community where people can live safely and securely



[People] Fostering human resources leading the future and building community ties



[Employment] Creating sustainable and attractive jobs



Public infrastructure

- Joban expressway** (2015.3) (Entire line in service)
- Onahama Port** (2022.6) (Commencement of full-scale operation)
- Fukushima Reconstruction Roads** (2020s) (Scheduled completion)
- Completion of the restoration of 10 fishing ports in the prefecture** (2020s)
- Joban Line** (2020.3) (Full scale resumption of service)
- Tohoku Chuo Expressway (Soma-Fukushima Road)** (2021.4) (Entire section was opened)
- Tadami Line** (2022.10) (Full scale resumption of service)

Education and fostering human resources

- Futaba Future School (Senior & Junior High School)** (2015.4) (High school opening)
- Odaka Industrial Technology and Commerce High School** (2017.4) (Opened)
- Faculty of Food and Agricultural Sciences at Fukushima University** (2019.4) (Establishment)
- School of Health Sciences at Fukushima Medical University** (2021.4) (Establishment)

Decommissioning

- Naraha Center for Remote Control Technology Development** (2016.4) (Commencement of full-scale operation)
- Collaborative Laboratories for Advanced Decommissioning Science (CLADS)** (2017.4) (Commencement of operation)
- Okuma Analysis and Research Centre** (2018.3) (Commencement of partial operation)
- Creative decommissioning robot competition (Hairo Sozo Robocon)** (2016~) (Seeds from the 6th Competition (2021))

Commercial facilities

- Shopping centre "YO-TASHI"** (2016.3) (Opened)
- Yamakya district's reconstruction hub and commercial facility "Tonya no Sato"** (2017.7) (Opened)
- Odaka Store** (2018.12) (Opened)
- Michi-no-Eki Namie** (2021.3) (Grand opening)
- Tomioka Town commercial complex "Sakura Mall Tomioka"** (2016.11) (Opened)
- Roadside Station of Iitate Village Madeikan** (2017.8) (Opened)
- Kokonara shopping mall** (2018.6) (Opened)
- Commercial facility "Okumart"** (2021.4) (Opened)

Creation of relocation, settlement and increasing the number of related/non-resident population

- Katsurao Village Community Revitalization Centre "Azalea"** (2018.6) (Opened)
- J Village** (2019.4) (Full reopen)
- ICT Office "Smart City AiCT"** (2019.4) (Opened)
- The Great East Japan Earthquake and Nuclear Disaster Memorial Museum** (2020.9) (Opened)
- Futaba Business Incubation and Community Center** (2020.10) (Opened)
- The Historical Archive Museum of Tomioka** (2021.7) (Opened)
- Fukushima 12 Municipalities Relocation Support Center** (2021.7) (Opened)
- Preserved Disaster Remains: Namie Municipal Ukedo Elementary School** (2021.10) (Opened)

Robotics, Drones, Aerospace

- University of Aizu Revitalization Center** (2015.10) (Commencement of operation)
- Fukushima Robot Test Field** (2020.3) (Fully opened)

Healthcare-related industries

- Fukushima Medical Device Development Support Center** (2016.11) (Commencement of operation)
- Fukushima Global Medical Science Centre** (2016.12) (Commencement of full operation)

Energy, Environment, Recycling

- Fukushima Renewable Energy Institute, AIST (FREIA)** (2014.4) (Commencement of operation)
- Fukushima Hydrogen Energy Research Field** (2020.3) (Opening)
- Soso Smart Eco-Company** (2020.10) (Operation commenced)
- Wood Biomass Power Generation** (2013~) (Operational)

Healthcare-related facilities

- Futaba Medical Center-affiliated Futaba Revitalization Clinic** (2016.2) (Commencement of medical services)
- Futaba Medical Centre-affiliated Hospital** (2018.4) (Commencement of medical services)

Educational facilities

Resumption of local schools

- Odaka District, Minamisoma City: Kindergartens, elementary schools and junior high schools (2017.4)
- Naraha Town: Childcare centre, elementary schools and junior high schools (2017.4)
- Yamakya District, Kawamata Town: Elementary schools and junior high schools (2018.4)
- Tomioka Town: Elementary schools and junior high schools (2018.4)
- Childcare centres (2018.4)
- Namie Town: Childcare centres, elementary schools and junior high schools (2018.4)
- Katsurao Village: Kindergartens, elementary schools and junior high schools (2018.4)
- Iitate Village: Childcare centres, elementary schools and junior high schools (2018.4)
- Hirono Town: Childcare centres, elementary schools and junior high schools (2019.4)
- Kawauchi Village: Elementary schools and junior high schools (2012.4)
- Miyakoji District, Tamura City: Elementary schools and junior high schools (2014.4)
- Okuma Town: Schools for compulsory education (2023.4)

Residential facilities

Constructing Revitalization Public Housing

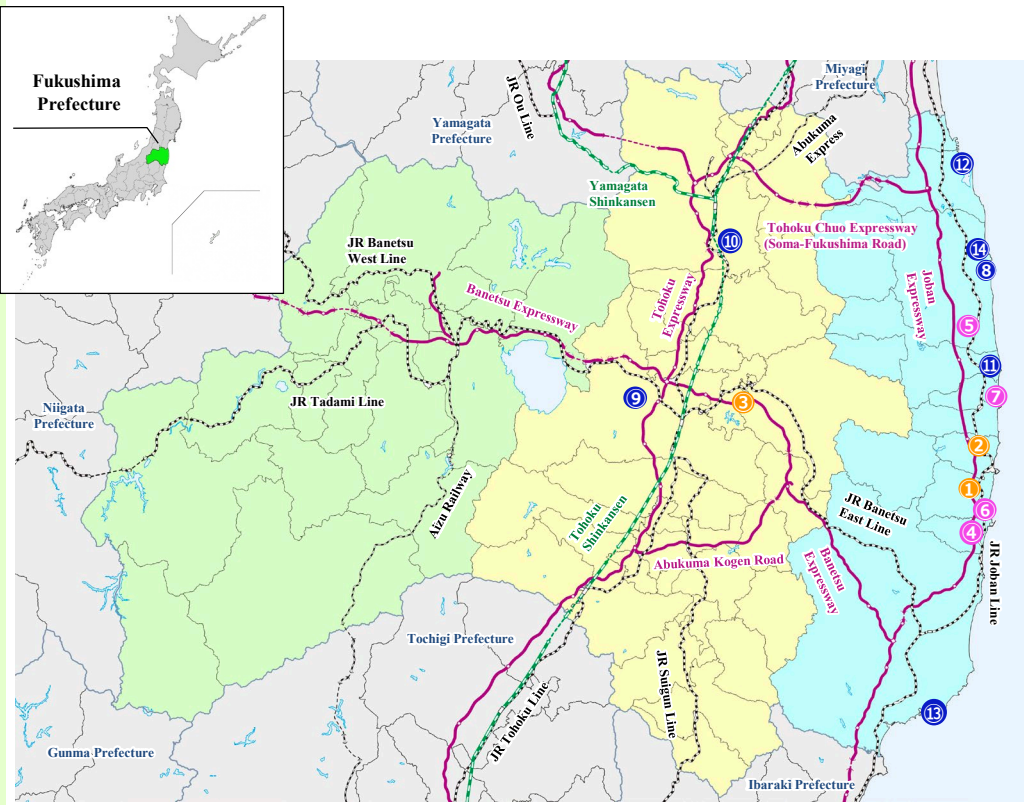
- For those affected by the earthquake and tsunami: Completed 2,807 units in 11 municipalities
- For evacuees from the nuclear power accident: Completed a total of 4,767 units in 15 municipalities
- For returnees and others: Planned development of 845 units in 10 municipalities

Reference: Iwasaki Housing Complex, Iwaki City

Wide area bus services

Wide area bus services (Start date of service of each route)

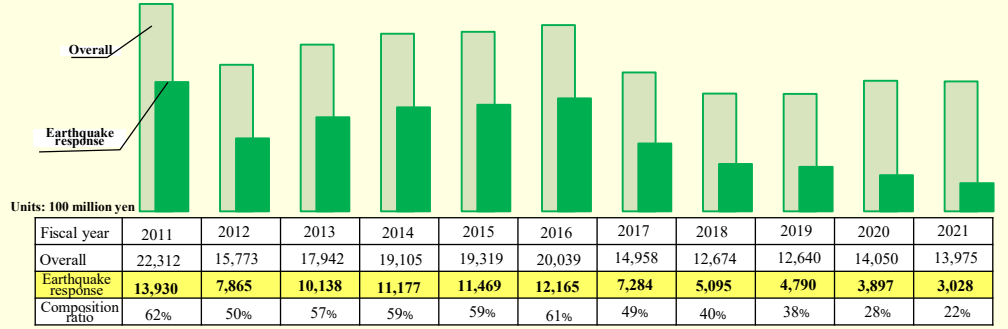
- Iwaki to Tomioka Line (2017.4.1)
- Katsurao to Funehiki Line (2017.4.1)
- Kawauchi to Funehiki Line (2017.4.1)
- Kawauchi to Ono Line (2017.10.2)
- Minamisoma, Kawamata to Fukushima via Fukushima Medical University Line (2017.10.1)
- Kawauchi to Tomioka Line (2018.4.2)
- Tomioka to Namie FH2R Line (2021.4.1)



Recovery of the environment

- Environmental Radiation Monitoring Centre** (2015.11) (Operation commenced)
- Centre for Environmental Creation** (2016.7) (Commenced full operation)
- Interim Storage Facility** (2015.3) (Start of transfer)
- Decontamination** (2023.7) (Whole area decontamination with exception of the Difficult-to-treat Area)

○ Trend of expenditure for earthquake and nuclear disaster response projects (prefectural)

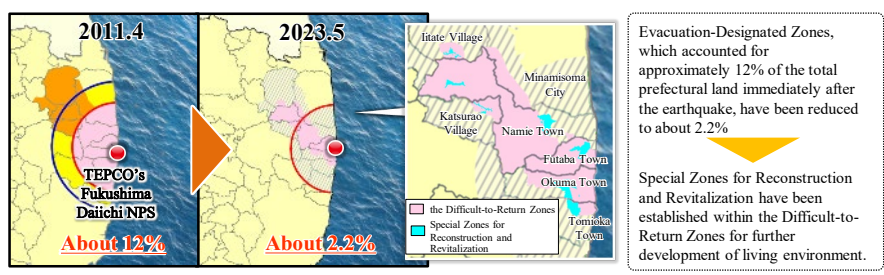


Towards the Realisation of "New Fukushima" - Tracing the path of recovery(2/2)

Steady reconstruction and revitalization of evacuation zones

◆ Development status of living environment in 15 municipalities (Residential rate as of May 2023)

Medical ... ● Education... ● Welfare... ● Commerce ... ● Other... ●



Shinchi Town

- Dec. 2016 ● Completion of Shinchi Station building [Photo]
- Nov. 2018 ● Completion of Shinchi Energy Centre
- Jun. 2019 ● Reopening of Tsurushihama Swimming Beach

Soma City

- Apr. 2015 ● Opening of the Soma City Memorial Hall for Commemoration and Remembrance
- Apr. 2017 ● Matsukawaura Bridge placed in service, resumption of illumination
- Feb. 2018 ● Resumption of nori seaweed harvest and shipment (first time since the disaster) [Photo]
- Mar. 2018 ● Commencement of operations at Soma LNG Terminal and other facilities
- Oct. 2020 ● Grand opening of Matsukawaura Seaside Station

Minamisoma City

- Apr. 2014 ● Odaka Municipal Hospital resumes outpatient services three days a week
- Jul. 2016 ● [Evacuation orders lifted, excluding Difficult-to-Return Zones]
- Apr. 2017 ● Reopening of Odaka Dispensary
- Apr. 2017 ● Opening of Odaka Industrial Technology and Commerce High School [Photo]
- Mar. 2018 ● Opening of Yagisawa Tunnel of Prefectural Road No. 12 Haramachi—Kawamata Line
- Apr. 2018 ● Resumption of Umenoka, an intensive care home for the elderly
- Dec. 2018 ● Reopening of Yosshi-i Land, a long-term care health facility
- Dec. 2018 ● Opening of public-financed commercial facility "Odaka Store"
- Jan. 2019 ● Opening of Odaka district revitalization hub facility "Odaka Exchange Center"
- Mar. 2020 ● Full-scale opening of Fukushima Robot Test Field
- Apr. 2020 ● Opening of Odaka Certified childcare centre

(Odaka District, etc.) Residential rate 62.0%

Namie Town

- Mar. 2017 ● [Evacuation order lifted excluding Difficult-to-Return Zones]
- Mar. 2017 ● Opening of Namie Clinic within the town
- Apr. 2017 ● Reopening of Namie Station on JR Joban Line
- Dec. 2017 ● [Certification of the Plan for Special Zone for Reconstruction and Revitalization of Namie Town]
- Apr. 2018 ● Opening of elementary, junior high schools and certified childcare centres
- Mar. 2020 ● Opening of Fukushima Hydrogen Energy Research Field
- Mar. 2021 ● Grand opening of Michi-no-Eki Namie (Roadside Station)
- Aug. 2021 ● Grand opening of public accommodation facility "Ikoino-mura Namie"
- Oct. 2021 ● Opening of Disaster Remains: Namie Municipal Ukedo Elementary School
- Jun. 2022 ● Opening of complex facility "Fureai Center Namie"
- Mar. 2023 ● [Evacuation orders lifted in Special Zones for Reconstruction and Revitalization]
- Apr. 2023 ● Opening of Fukushima Institute for Research, Education and Innovation (F-REI) [Photo]

Residential rate 13.4%

Futaba Town

- Sept. 2017 ● [Certification of the Plan for Special Zone for Reconstruction and Revitalization of Futaba Town]
- Sept. 2019 ● Experimental cultivation of spinach and other vegetables began in Morotake District
- Mar. 2020 ● [Evacuation orders lifted, excluding Difficult-to-Return Zones]
- Mar. 2020 ● Reopening of Futaba Station on JR Joban Line
- Sept. 2020 ● Opening of The Great East Japan Earthquake and Nuclear Disaster Memorial Museum
- Oct. 2020 ● Opening of Futaba Business Incubation and Community Center
- Aug. 2022 ● [Evacuation orders lifted in Special Zones for Reconstruction and Revitalization]
- Feb. 2023 ● Opening of Futaba Town clinic
- Apr. 2023 ● Grand Opening of "Futaba Super Zero Mill" [Photo]

Residential rate 1.3%

Okuma Town

- Nov. 2017 ● [Certification of the Plan for Special Zone for Reconstruction and Revitalization of Okuma Town]
- Apr. 2019 ● [Evacuation orders lifted excluding Difficult-to-Return Zones]
- Apr. 2019 ● Completion of New Town Hall in Ogawara District [Photo]
- Aug. 2019 ● First shipment from Nexus Farm Okuma strawberry farm
- Mar. 2020 ● Reopening of Ono Station on JR Joban Line
- Apr. 2020 ● Opening of group home for the elderly "Okuma Mominoki-en"
- Feb. 2021 ● Opening of Okuma Town clinic
- Apr. 2021 ● Opening of commercial facility "Okumart"
- Oct. 2021 ● Opening of accommodation facility with hot spring "Hot Okuma" and a community facility "Linkru Okuma"
- Apr. 2022 ● Opening of an integrated elementary and junior high school for compulsory education in Aizuwakamatsu City
- Jun. 2022 ● [Evacuation orders lifted in Special Zones for Reconstruction and Revitalization]
- Jul. 2022 ● Opening of Okuma Incubation Center for start-ups
- Apr. 2023 ● Move to the temporary school building in Okuma Town (move to a new school building scheduled for summer 2023)

Residential rate 5.5%

Tomioka Town

- Mar. 2017 ● Grand Opening of "Sakura Mall Tomioka"
- Apr. 2017 ● [Evacuation orders lifted, excluding Difficult-to-Return Zones]
- Oct. 2017 ● Reopening of Tomioka Station on JR Joban Line
- Mar. 2018 ● [Certification of the Plan for Special Zone for Reconstruction and Revitalization of Tomioka Town]
- Apr. 2018 ● Opening of Futaba Medical Center-affiliated Hospital [Photo]
- Apr. 2018 ● Resumption of elementary and junior high schools within the town
- Mar. 2020 ● Reopening of Yonomori Station on JR Joban Line
- Jul. 2021 ● Opening of Fukushima 12 Municipalities Relocation Support Center
- Jan. 2022 ● [Eased entry restrictions in the Special Zones for Reconstruction and Revitalization]
- Mar. 2022 ● Opening of Sakuranosono, an intensive care home for the elderly
- Apr. 2022 ● [Commencement of preparatory accommodations for the lifting of evacuation orders]
- Apr. 2023 ● [Evacuation orders lifted in Special Zones for Reconstruction and Revitalization]
- Jun. 2023 ● Opening of "Hamafuku Tomioka," a home care facility that provides regular and on-demand home visits

Residential rate 19.0%

Iitate Village

- Aug. 2016 ● Opening of Fureai-kan community centre
- Sept. 2016 ● Resumption of medical services at Iitate Clinic
- Mar. 2017 ● [Evacuation orders lifted except for the Difficult-to-Return Zones]
- Aug. 2017 ● Opening of the Iitate Village Michi-no-Eki Madeikan (Roadside Station) [Photo]
- Apr. 2018 ● [Certification of the Plans for Special Zone for Reconstruction and Revitalization of Iitate Village]
- Apr. 2018 ● Reopening of elementary, junior high school and certified childcare centre within the village
- Sept. 2018 ● Resumption of community bus service
- Apr. 2020 ● Opening of a 9-year compulsory education school "Iitate Kibo-no-Sato Gakuen"
- May 2023 ● [Evacuation orders lifted for the Specified Reconstruction and Revitalization Base Areas & Nagadoro Magata Park]

Residential rate 32.0%

Kawamata Town

- Jun. 2015 ● Opening of Kotsunagi Bypass of National Road Route 114
- Oct. 2016 ● Resumption of medical service at Yamakiya Clinic
- Mar. 2017 ● [Evacuation orders completely lifted]
- Jul. 2017 ● Opening of a reconstruction hub and commercial facility "Tonya-no Sato" [Photo]
- Apr. 2018 ● Reopening of elementary and junior high schools in the Yamakiya district
- Sept. 2019 ● Agreement of new industrial base development between Mitsuji and Ritsumeikan University
- Mar. 2022 ● Completion of Sekiba Tunnel of National Road Route 115

(Yamakiya District) Residential rate 49.8%

Katsurao Village

- Jun. 2016 ● [Evacuation order lifted excluding areas with Difficult-to-Return Zones]
- Nov. 2017 ● Resumption of medical services at Katsurao Village Clinic
- Apr. 2017 ● Reopening of Maruichi Store
- Jul. 2017 ● Reopening of Ishii Shokudo restaurant, Yamazaki Y Shop Yamasa [Photo]
- Apr. 2018 ● Resumption of kindergartens, elementary and junior high schools within the village
- May 2018 ● [Certification of the Plans for Special Zones for Reconstruction and Revitalization of Katsurao Village]
- Jun. 2018 ● Opening of Katsurao Village Community Revitalization Centre "Azalea"
- Jun. 2022 ● [Evacuation order lifted in Special Zones for Reconstruction and Revitalization]

Residential rate 36.1%

Tamura City

- Jul. 2011 ● Resumption of medical service at Miyakoji Dental Clinic
- Mar. 2012 ● Reopening of Miyakoji Madoka-So, an intensive care home for the elderly
- Apr. 2014 ● [Evacuation order completely lifted]
- Apr. 2014 ● Reopening of elementary and junior high schools within Miyakoji Machi
- Apr. 2014 ● Opening of a publicly-funded commercial facility "Domo"
- Mar. 2016 ● Opening of confectionery "Miyakoji Sweets Yui" [Photo]
- Apr. 2017 ● Opening of Miyakoji Elementary School
- Jul. 2019 ● Opening of Tamura Municipal Hospital

(Miyakoji District) Residential rate 86.1%

Kawauchi Village

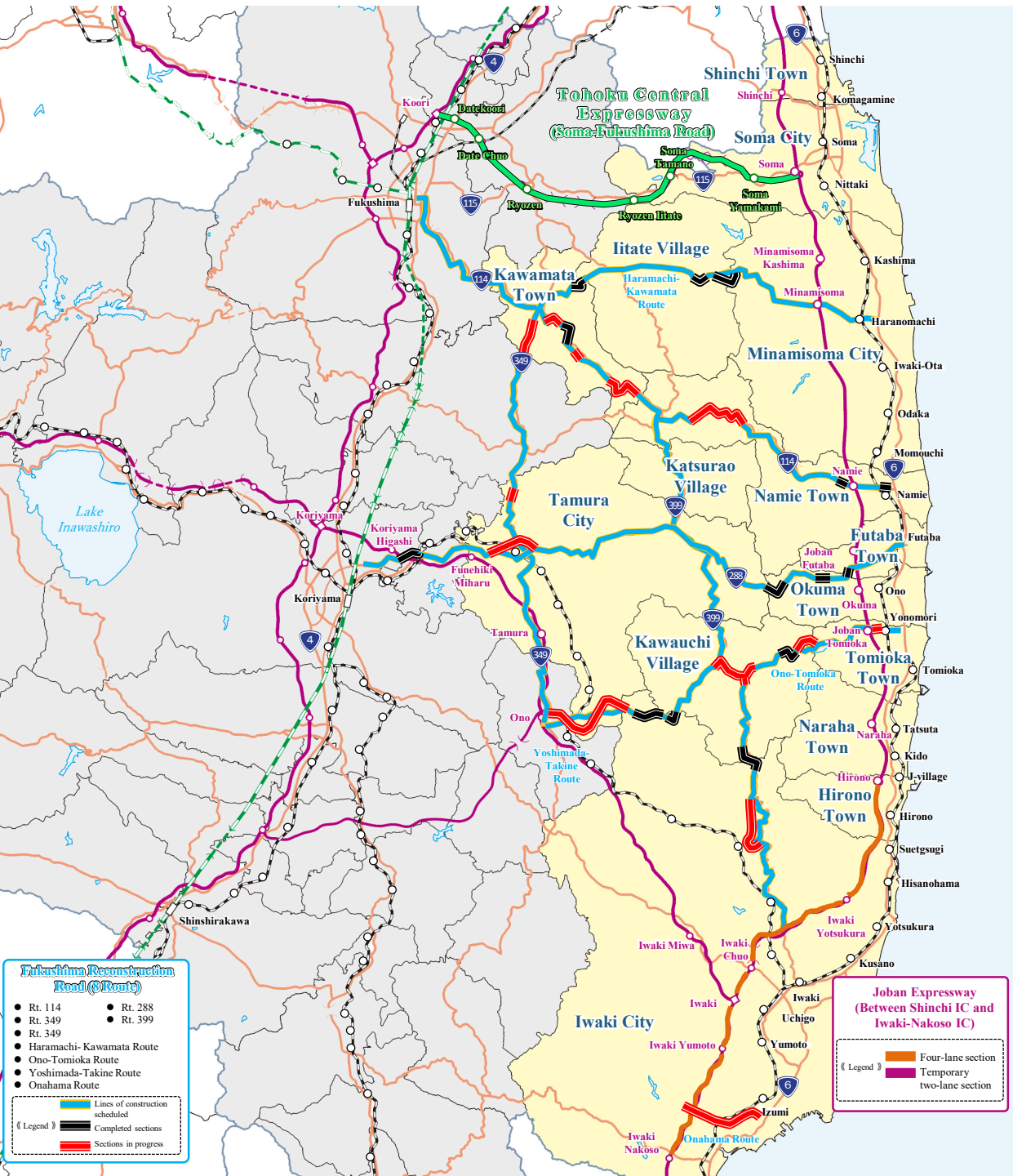
- Apr. 2012 ● Reopening of the municipal health, welfare and medical facility "Yufune"
- Apr. 2012 ● Reopening of elementary and junior high schools, nurseries within the village
- Oct. 2014 ● [Evacuation order lifted for Evacuation Order Cancellation Preparation Zones]
- Nov. 2015 ● Opening of Intensive Care Home for the Elderly Kawauchi
- Mar. 2016 ● Opening of commercial facility "Shopping Centre YO-TASHI"
- Apr. 2016 ● Opening of "Moritaro Pool" [Photo]
- Jun. 2016 ● [Evacuation orders completely lifted]
- Apr. 2021 ● Opening of an integrated elementary and junior high school
- Apr. 2021 ● Opening of a certified daycare centre

Residential rate 83.2%

Iwaki City

- Apr. 2017 ● Opening of Iwaki Green Base [Photo]
- Jul. 2017 ● Opening of Iwaki FC Park
- Jun. 2018 ● Grand opening of AEON Mall Iwaki Onahama
- Dec. 2018 ● Establishment of Iwaki Medical Center
- Sept. 2019 ● Training camp for Samoa national team for Rugby World Cup
- Apr. 2022 ● Operation of the largest domestic Wood Biomass Power Generation
- Nov. 2022 ● Iwaki FC won J3 championship and promoted to J2

Residential rate 90.7%



Hirono Town

- Aug. 2011 ● Reopening of Baba Clinic
- Jan. 2012 ● Reopening of Hirono Pharmacy
- Mar. 2012 ● [Return of Town Hall, lifting of mayor's evacuation orders] (Emergency Evacuation Preparation Zone (national designation) lifted on September 30, 2011)
- Apr. 2012 ● Reopening of Hanabusaan, an intensive care home for the elderly
- Aug. 2012 ● Reopening of elementary and junior high schools within the town
- Apr. 2015 ● Opening of Futaba Future High School
- Mar. 2016 ● Grand opening of a commercial facility, "Hirono Terrasse" [Photo]
- Apr. 2019 ● Opening of Futaba Future Junior High School
- Apr. 2019 ● Opening of a certified childcare centre
- Apr. 2019 ● Grand opening of J-Village

Residential rate 90.7%

Naraha Town

- Jun. 2014 ● Reopening of Tatsuta Station on JR Joban Line
- Sept. 2015 ● [Evacuation orders completely lifted]
- Feb. 2016 ● Establishment of Futaba Medical Center-affiliated Futaba Revitalization Clinic
- Mar. 2016 ● Reopening of Lily Garden, an intensive care home for the elderly
- Apr. 2017 ● Reopening of elementary, junior high schools and certified childcare centres within the town
- Jun. 2018 ● Grand opening of "Kokonara Shopping Mall" and "Naraha CANvas"
- Jul. 2018 ● Partial reopening of J-Village
- Apr. 2019 ● Opening of an indoor sports facility, "Naraha Sky Arena"
- Apr. 2019 ● Grand opening of J-Village
- Apr. 2019 ● Reopening of a hot spring and health facility at Michi-no-Eki Naraha (Roadside Station)
- Jun. 2020 ● Reopening of Michi-no-Eki Naraha Product Promotion Centre
- Jun. 2022 ● Opening of "CODOU", a support centre for relocation and living

Residential rate 65.9%