

The 12th Fukushima Vocal Ensemble Competition 2019

March 21 - March 25, 2019
Fukushima, Japan



Contents

Hosts / Co-hosts / Sponsors ————— 1

Venue

Tentative Schedule

Program

Competition Rules ————— 2~3

Category

Entry Qualification

Performance

Order of Performance

Accompaniment

Judging and Evaluation

Prizes and Awards

Rehearsal

Copyright

Information

Conditions of Participation — 4~5

Preliminary Screening

Registration

Participation Fee

Accommodation / Meals / Transport

Financial Assistance

Admission / Application of Visa

Contact Address

Preliminary Screening

Application Form ————— 6~7

Fukushima ————— 8~9



感謝の歌声 響け、日本人の心に THE 11th Fukushima Vocal Ensemble Competition 2018
第11回 声楽アンサンブルコンテスト全国大会

The 12th Fukushima Vocal Ensemble Competition 2019

“Inspiring singing voices, Resonating to the true skies ”

March 21 – March 25, 2019 Fukushima, Japan

The Fukushima Vocal Ensemble Competition is the biggest choral competition for small vocal ensemble groups (2-16 singers) in Japan. Every year we invite more than 120 top level choirs selected from all over Japan. And now the competition is open internationally to share the joy of singing with people from all around the world.

Fukushima is known as the “Kingdom of Choirs” in Japan, which has a big population of music fans and award-winning choirs. You are cordially invited to experience the fascinating atmosphere of our music cities, and let your singing voices ring out together under the sky, which a 19-century poet once described as the “True Sky.”

Hosted by

- Fukushima Prefecture
- Fukushima Prefectural Board of Education
- Executive Committee of the Fukushima Vocal Ensemble Competition

Co-hosted by Japan Choral Association, Japan Choral Association Tohoku Branch, Fukushima Chorus League, Fukushima City, Fukushima City Board of Education

Sponsored by Agency for Cultural Affairs (expected), All Japan Senior High School Cultural Federation, Fukushima Prefecture Senior High School Cultural Federation, Fukushima Prefectural Association of Junior High School Principals, Fukushima Prefectural Association of Elementary School Principals, Fukushima International Association, Fukushima-Minpo Co., Ltd., The Fukushima Minyu, The Asahi Shimbun Fukushima General Bureau, Fukushima Bureau, The Mainichi Newspapers Fukushima Bureau, The Yomiuri Shimbun Fukushima Bureau, Sankei Shimbun Co., Ltd., Fukushima Branch Office, The Kahoku Shimpō, Nikkei Inc. Fukushima Bureau, Jiji Press Ltd., Fukushima Bureau, Kyodo News Fukushima Bureau, NHK Fukushima, Radio Fukushima, Fukushima Television Broadcasting Co., Ltd., Fukushima Central Television, KFB (Fukushima Broadcasting Co., Ltd.), TV-U Fukushima, Inc., FM Fukushima Co., Ltd.

Venue Fukushima City Music Hall, Grand Hall
1-1 Irie Town, Fukushima City, Fukushima Prefecture, 960-8117 Japan

Tentative Schedule

Time	March 20 Wed.	March 21 Thu.	March 22 Fri.	March 23 Sat.	March 24 Sun.	March 25 Mon.
		Competition				
10:00		Category I	Category II	Category III	Grand Champion Competition	Workshop
12:00				Award Ceremony		
14:00				Category IV	Special program	
16:00					Award Ceremony	
18:00		Award Ceremony	Award Ceremony	Award Ceremony	Welcome Party	
	(Hall Visit)	(Hall Visit)	(Hall Visit)	(Meeting for tomorrow)		

*Open at 9:30a.m. Start at 10:00a.m. on March 21 - 24. / This schedule is subject to change by the committee.

Program

- Category Competition
- Grand Champion Competition
Competition by Gold titled choirs in each category
- Special Program
- Welcome Party with local choirs
- Workshop
Presentation on traditional music and culture by overseas choirs and local choirs.

*Overseas choirs will be asked to perform at the Category Competition, Workshop and Welcome Party.

Competition Rules

Category Category I: Ages 12 – 15
Category II: Ages 15 – 18
Category III: Ages 6 – 12 (Up to 18)
Category IV: Other than Category I, II and III

*Ages are determined as the age of the participant on the day of March 24, 2019

*Some singers of ages 12-15 (Category I) and ages 15-18 (Category II) can participate in Category III only if the number of ages 6-12 is biggest compared to ages 12-15 and ages 15-18 respectively.

*The singers of ages 12-15 (Category I) and ages 15-18 (Category II) must sing as a children's choir, when in Category III.

*Overseas choirs will be asked to perform at the Welcome Party on March 24 and Workshop on March 25 in addition to the Category Competition.

*Overseas choirs will receive financial assistance of Max JPY 7,000 per night for 3 nights from March 22 to March 24 for each choir member (up to 18 persons). Please refer to the section of Accommodation and Financial Assistance.

Entry Qualification

- The number of singers should be 2-16 (no fewer than 2 and no more than 16) and member changes for musical pieces will be approved only within the registered members.
- No singer shall compete as a member of more than one choir, regardless of the categories. A conductor and an accompanist will not be included in this regulation.
- For Japan-based choirs, the number of school choirs shall be limited to one from each school in any of Category I, II and III.
- No qualification is required for a conductor or an accompanist. For Japan-based choirs, a principal shall approve a conductor and an accompanist for Category I, II or III.
- A conductor and an accompanist will be included in the singers when they sing in the choir.
- The Gold titled choirs in each category shall proceed to the Grand Champion Competition on March 24.
- In principle, a singer who have not registered in the category competition will not be able to perform in the Grand Champion Competition.

Performance

- There is no compulsory work in any category. All music pieces performed will be determined by the competitions. Any change will not be allowed after registration.
- For each category, the overall duration of performance time from the beginning of the first piece until the end of the last piece (including time between songs) must not exceed 10 minutes.
- For the Grand Champion Competition, the overall duration of performance time from the beginning of the first piece until the end of the last piece (including time between songs) must not exceed 15 minutes.
- Tuning musical instruments on stage is included in the performance time.
- Failure to comply with the above rules will result in disqualification.

Order of Performance

- The order of performance in each category shall be determined by lottery, drawn by representatives from each choir on a specified date. Choirs that cannot attend the lottery shall leave the selection to the organizer.
- The Category III performance will take place during the first half of the event on March 23, and followed by the Category IV performance in the second half.
- When a conductor or an accompanist performs in more than one choir, and their schedule in the venue is in conflict with others, the lottery will be held again to resolve the conflict.
- The order of performance for the Grand Champion Competition shall be determined by lot, drawn by the organizer, and will be announced at a later date.



- Accompaniment**
- The instruments and style of accompaniment shall be up to each competing choir.
 - A piano (Steinway&Sons), a positive organ and a pipe organ (Marcussen&Sons) will be provided by the organizer. The pitch of the piano will be A=442Hz.
 - If the contestants use musical instruments other than the above, they are expected to carry their own instruments, and will be responsible for the required expenses.
 - If the contestants require a person to turn the pages of notes, each choir shall prepare for it.
- Judging and Evaluation**
- The following judges will evaluate the competition.
Javier Busto (Composer), Maki Ueda (Composer)
Ichiro Uenishi (Conductor), Shinsuke Kishi (Conductor)
Masami Suehiro (Baritone), Hideki Motoyama (Conductor)
Hiroyuki Yamamoto (Conductor)
 - Each competition is evaluated according to a round system specified separately.
 - Results of the category competition and judges' comments will be mailed to each participating choir after the competition.
- Prizes and Awards**
- The competition will be evaluated in each category, and Gold, Silver, Bronze or Excellence prizes will be awarded to every participating choir in each category.
 - In the Category Competition, Gold prizes will be awarded to the top 5 choirs in each of the respective categories, I, II and IV, and the top choir in Category III.
 - In the Grand Champion Competition, JPY 500,000 will be awarded to the best choir, JPY 300,000 to the 2nd winner, JPY 100,000 to the 3rd winner and JPY 30,000 to other finalists.
 - In addition, the "Governor of Fukushima" Award will be awarded to the best choir, "Mayor of Fukushima" Award to the 2nd winner, "Superintendent of Education" Award to the 3rd winner.
- Rehearsal**
- On the day of the performance, the participating choir will be able to do a rehearsal twice at the venue.
 - Also, the travel agency authorized by the organizer will book a rehearsal room in the city.
 - Up to 2 members of the participating choirs can look over the competition hall on the day before the performance.
- Copyright**
- Copyright royalties for the pieces managed by the Japanese Society for Rights of Authors, Composers and Publishers (JASRAC) will be paid by the organizer.
 - If the competitors partially omit or rearrange the piece, they have to gain an approval from the copyright holder in advance.
- Information**
- The information provided by the participating choirs will be used for organizing the competition, such as posting on websites, printing in publications, recording to CDs or DVDs, and provided to the mass media and parties related to management of the competition.
 - The organizers or the companies authorized by the organizer may use pictures, sound recordings and video recordings on the Internet, in publications and broadcasting, and provide the information to the mass media. The companies authorized by the organizer will sell pictures and recordings in the form of photos, CDs or DVDs.



Conditions of Participation

Preliminary Screening

Japan-based choirs

Applicants have to be recommended by the choral association of each prefecture or approved by the organizer through the preliminary screening. Some choirs could be qualified by recommendation by the organizer.

Overseas choirs

Applicants have to be approved through the preliminary screening conducted separately prior to the one for Japan-based choirs. Some choirs could be qualified by recommendation by the organizer.

Applications for the preliminary screening:

- a. An Application form written in English
- b. A recent recording of the choir recorded by 2-16 expected singers, after April 2018.
 - *The screening process will be conducted anonymously. Therefore, the choir's name and any other sounds except the performance must not be recorded on the CD etc.
 - *The time of performance shall be within 10 minutes, and the choral pieces can be different from the ones to be performed in the competition. The each piece must be recorded on separate tracks.
 - *The mixing of recorded sound is strictly prohibited for the fair screening.
 - *The recording media shall be either a cassette tape, a CD(CD-DA format) or a MD. DVDs are not acceptable. The recording media will not be returned.
- c. One digital photo showing the choir

Deadline: October 31, 2018

*The result of the preliminary screening will be announced by November 30, 2018 at the latest.

Registration

Qualified Choirs should provide the following documents.

Registration Documents:

- a. Fully completed registration forms.
- b. A bank cheque or proof of bank transfer covering the participation fee (only if you select bank transfer).
- c. 7 original scores for the category competition

Deadline: a.&b. December 17, 2018 / c. January 15, 2019

*The mailing address will be announced later.

Participation Fee

Japan-based choirs

Ticket fees will be charged when the choirs participate as an audience. The costs for CDs, DVDs and photos will be announced separately later.

Overseas Choirs

For participation in the competition, a non-refundable participation fee of JPY 20,000 has to be paid per choir after being selected through the preliminary screening. Any other costs that arise must be paid by the applicant.

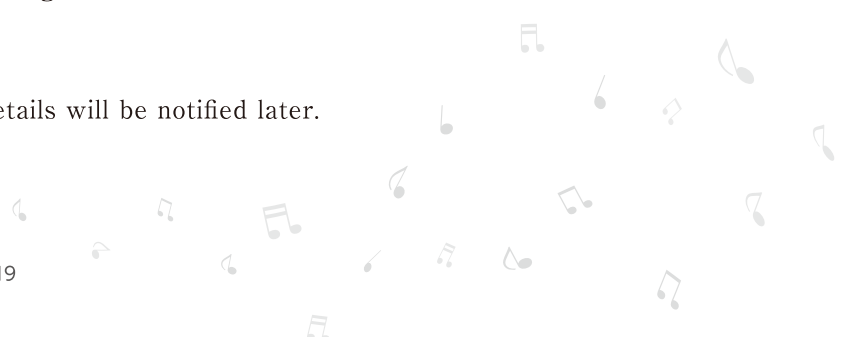
The participation fee JPY 20,000 per choir covers;

- a. Free entry to the competitions and Friendship Concert, Welcome Party and Workshop for each choir member including the conductor and the accompanist
- b. Program booklet per choir member
- c. CDs and DVDs recorded by the authorized agent
- d. Photo taken by the authorized agent

Payment Methods;

- a. Credit Card
- b. Bank Transfer *The bank details will be notified later.
- c. A Bank cheque

Deadline: December 17, 2018



Accommodation/
Meals/Transport

Japan-based choirs

The participating choirs will be responsible for their travel and accommodation costs. The general travel services could be provided by travel agents authorized by the organizer.

Overseas choirs

The organizer provides the following package.

NO.	Package	Room	3 nights per person	Additional day per person
1	Economy Hotel	Twin	JPY 27,000	JPY 9,000
2	Deluxe Hotel	Twin	JPY 30,000	JPY 10,000
3		Single	JPY 33,000	JPY 11,000

This package includes;

- a. Accommodation for 3 nights, March 22-25 (check-out)
- b. 10 Meals
3 × breakfast, 4 × lunch, 3 × dinner (from lunch on March 22 to lunch on March 25)
including dinner at Welcome Party and lunch at Workshop
- c. Local transportation between the hotel and the venue/rehearsal room
- d. Rehearsal rooms
- e. English speaking guide

*The participating choirs will be responsible for their own costs of travel and accommodation. However, the competition has a fund to support overseas choirs with accommodation costs, JPY 21,000 per person for 3 nights. Please see the section of “Financial assistance.”

Payment Methods;

- a. Credit Card
- b. Bank Transfer *The bank details will be notified later.

Deadline: January 15, 2019

Financial
Assistance

Japan-based choirs

Japan-based choirs selected for the Grand Champion Competition will have financial assistance of Max JPY 7,000 per stay at hotels after selected for the finals for each choir member, including the conductor and the accompanist. If the choirs should return due to inevitable reasons, such as attending school events, they will be subsidized partial expenses up to 7,000 yen per contestant.

Overseas choirs

Accommodation etc.: Max JPY 21,000 per person for 3 nights

Overseas choirs, who are asked to perform at the Welcome Party and Workshop, will receive financial assistance of Max JPY 7,000 per night for 3 nights from March 22 to March 25 for each choir member (up to 18 persons), including the conductor and the accompanist, regardless of whether or not they proceed to the Grand Champion Competition.

Admission/
Application of
Visa

- a. Please kindly note that all applicants will be only admitted as a participant and obtain visa-related documents issued by us, if we received fully-completed registration forms and payments.
- b. Our authorized travel agency, on request basis, will arrange for non-performers' stay and issue the documents for visa applications as a tourist, but only if they received fully-completed applications and payments.

Contact Address

The Executive Committee of the Fukushima Vocal Ensemble Competition
(Cultural Promotion Division of the Fukushima Prefectural Government)
2-16 Sugitsuma Town, Fukushima City
Fukushima Prefecture
960-8670 Japan

URL <https://www.pref.fukushima.lg.jp/sec/11055a/seigaku.html>
e-mail bunka@pref.fukushima.lg.jp

The 12th Fukushima Vocal Ensemble Competition 2019
PRELIMINARY SCREENING APPLICATION FORM

Fill in using block letters and put ✓ mark in the chosen boxes.

Choir

Choir Name in English script

Choir Name in Chinese or Korean Characters (if any)

Address

Country

E-mail

Phone

Fax

Country code / Area code / Number

Country code / Area code / Number

Website

Contact Person

Mr. Ms. Mrs. Dr. Prof.

Name in English script

First Name Last Name

Name in Chinese or Korean Characters (if any)

First Name Last Name

Address

Country

E-mail

Phone

Fax

Country code / Area code / Number

Country code / Area code / Number

Participating in

Category I (ages 12-15) Category II (ages 15-18) Category III (ages 6-12 / up to 18) Category IV (others)

List of Choral Pieces – Recording (Max.10min)

No.	Title	Composer	Duration
	Example	W.A.Mozart	3:00
1.			
2.			
3.			

Number of Singers on the media recording Male + Female = Total (2-16 singers)

Date of Recording Date Month Year

Profile of the choir

Year of Establishment

Main Annual Activities and Highlights

Award History

Questionnaire – How did you hear about the competition?

List of Documents

Put ✓ mark in the column if the document has been enclosed and fill in the number of copies of the document.

✓	Document	Number of Copies
	Application Form (with signature)	
	A separate CD, MD or tape of sound recording (2-16 expected singers/ recorded after Apr. 2018 / Max 10min)	
	Digital photo of the choir	

All the documents should be submitted no later than October 31, 2018 to:

The Executive Committee of the Fukushima Vocal Ensemble Competition
(Cultural Promotion Division of the Fukushima Prefectural Government)
2-16 Sugitsuma Town, Fukushima City, Fukushima Prefecture, 960-8670 Japan
E-mail bunka@pref.fukushima.lg.jp

Agreement

We hereby declare that the information given in this form is correct. We also understand and agree to the competition rules and conditions of participation.

Date Month Year
 - -

Signature

Name

Position



福島 Fukushima

Fukushima is located in the north-east region of Japan and is approximately 200km, 100min by express train from Tokyo. It is called the “Kingdom of Choirs” in Japan, which has a big population of music fans and award-winning choirs. Along with its unique music friendly culture, there you can find abundant natural beauty and traditional samurai culture, which is still being handed down over the generations. You can enjoy renowned hot spring resorts and historical samurai sites before/after the competition. All true music lovers looking to experience the real Japan are welcome to Fukushima.

Thanks to the support and encouragement from all over the world, Japan has steadily recovered since the Great East Japan Earthquake in 2011. The Fukushima Vocal Ensemble Competition has also received hundreds of messages to encourage people in Fukushima. We will never forget the warm and heart-felt moments that we have shared with participants of the competition.

Now we are sure music has the power to get people together and bring about hope and encouragement. The Fukushima Vocal Ensemble Competition will keep going on to convey the joy of singing together.



The 12th Fukushima Vocal Ensemble Competition 2018 has been authenticated as a “beyond2020” program

“beyond2020” program is a cultural program that serves to authenticate local activities that contribute to the use of rich and diverse culture in local areas, creating a legacy that future generation would be proud of.

Tokyo 2020 baseball / softball games will open at Fukushima Azuma Baseball Stadium on 22 July 2020.



Fukushima Prefecture 福島県



Aizu-Wakamatsu, which used to be a castle town during the Edo Period (1603-1867)



Fukushima is an "onsen" (hot spring) kingdom.

From Fukushima Airport

Approx. 75min to the hotel in Fukushima city by taxi

From Narita Airport

Route 1

Narita Airport

▶ Tokyo Station

Approx. 1hr - 1hr 30min by Express Train "Narita Express"

Tokyo Station

▶ Fukushima Station

Approx. 1hr 30min by Express Train "Tohoku Shinkansen"

Route 2

Narita Airport

▶ Keisei Ueno Station

Approx. 45min - 1hr 50min by Keisei Railway trains

Keisei Ueno Station

▶ JR Ueno Station

Approx. 5min on foot

JR Ueno Station

▶ Fukushima Station

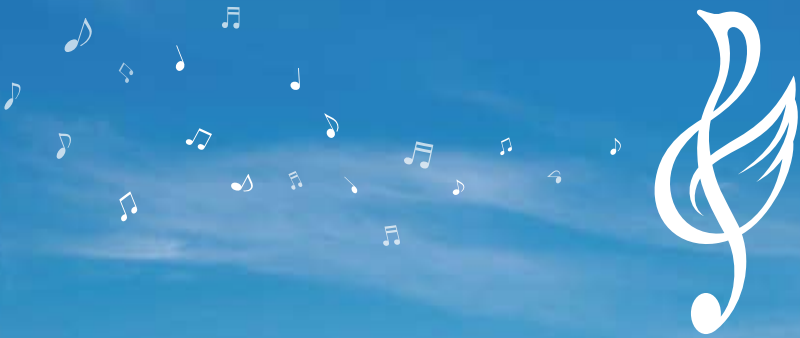
Approx. 1hr 25min by Express Train "Tohoku Shinkansen"

Route 3

Narita Airport

▶ Fukushima Station

Approx. 5hrs by Highway Bus (only 2 services a day)



The 12th
Fukushima Vocal Ensemble
Competition 2019