

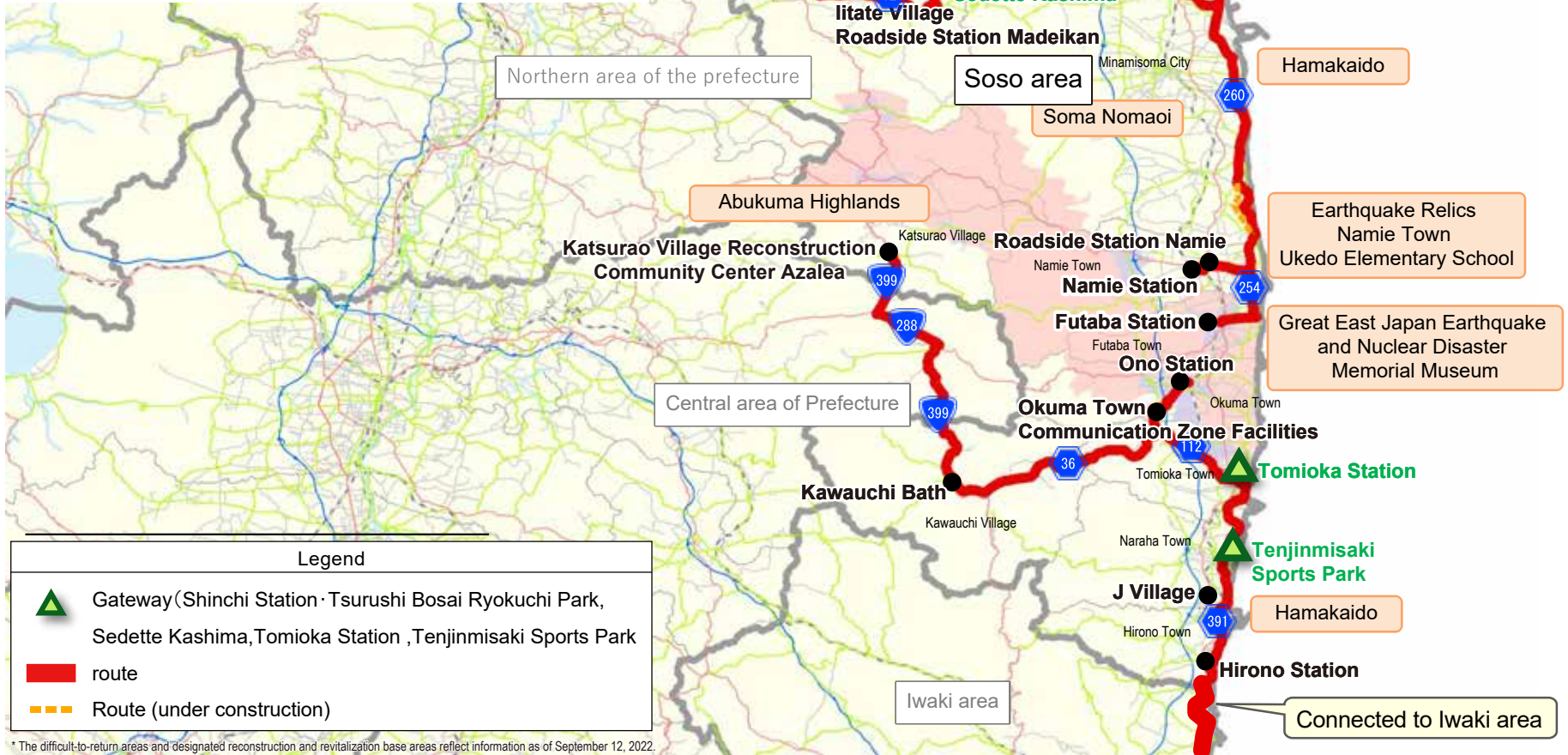
Fukushima Prefecture Wide Area Cycling Route 《Soso area》

■ themes and stories

A route that takes in the beautiful coastline and the Abukuma Highlands mountain ranges, and lets you feel the current state of reconstruction

The Soso area is home to beautiful coastlines such as Matsukawaura, traditional landscapes such as the Soma Nomaioi festival, and the abundant nature of the Abukuma Highlands. Additionally, many new facilities have been established to commemorate the Great East Japan Earthquake, giving a sense of the strength of the area as it steadily makes its way towards reconstruction.

■ Total route length: Approximately 1 7 0 km



* The difficult-to-return areas and designated reconstruction and revitalization base areas reflect information as of September 12, 2022.