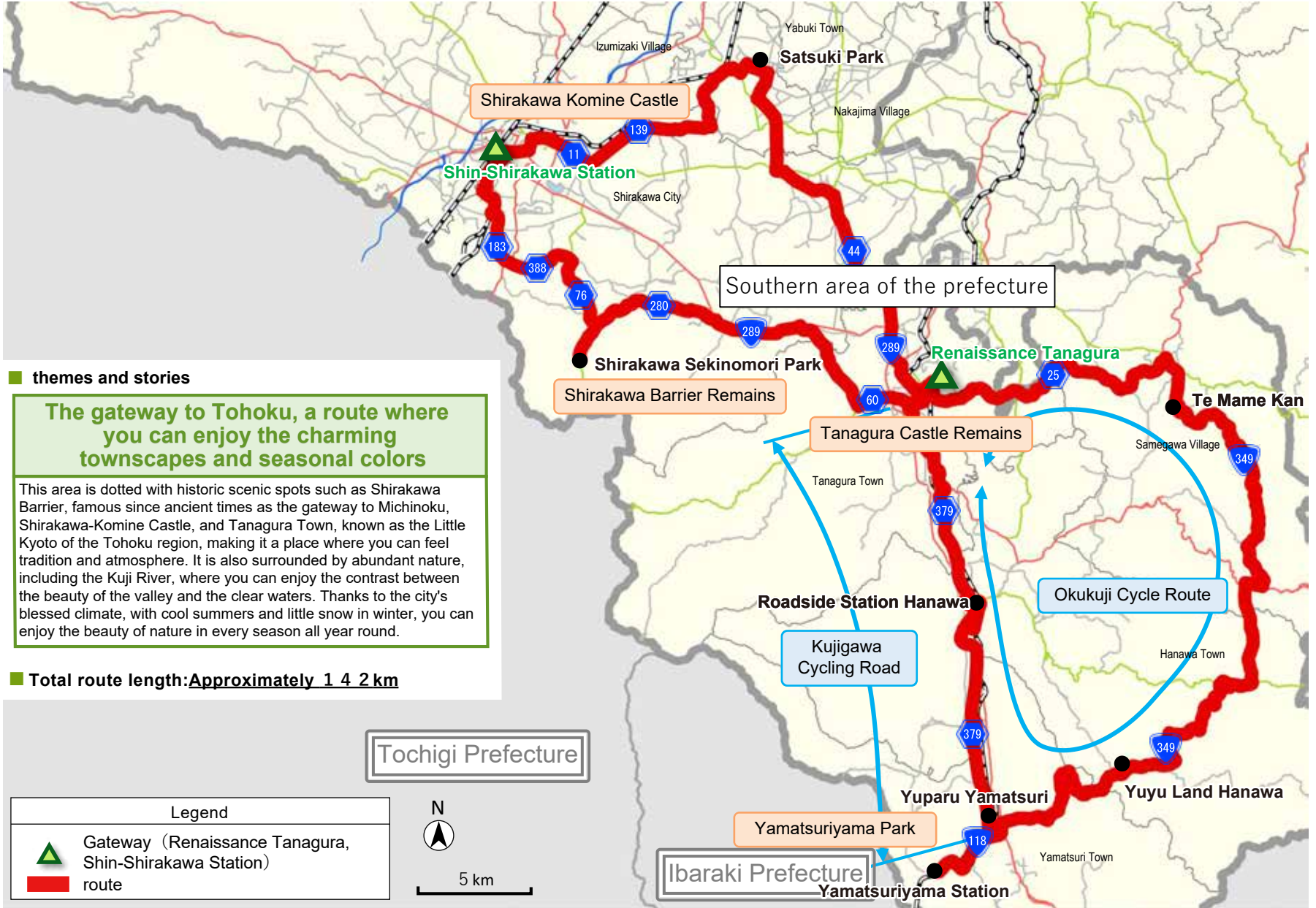


Fukushima Prefecture Wide Area Cycling Route

《Southern area of the prefecture》



■ themes and stories

The gateway to Tohoku, a route where you can enjoy the charming townscapes and seasonal colors

This area is dotted with historic scenic spots such as Shirakawa Barrier, famous since ancient times as the gateway to Michinoku, Shirakawa-Komine Castle, and Tanagura Town, known as the Little Kyoto of the Tohoku region, making it a place where you can feel tradition and atmosphere. It is also surrounded by abundant nature, including the Kuji River, where you can enjoy the contrast between the beauty of the valley and the clear waters. Thanks to the city's blessed climate, with cool summers and little snow in winter, you can enjoy the beauty of nature in every season all year round.

■ **Total route length: Approximately 142 km**

Legend	
	Gateway (Renaissance Tanagura, Shin-Shirakawa Station)
	route

N

 5 km

Tochigi Prefecture

Ibaraki Prefecture